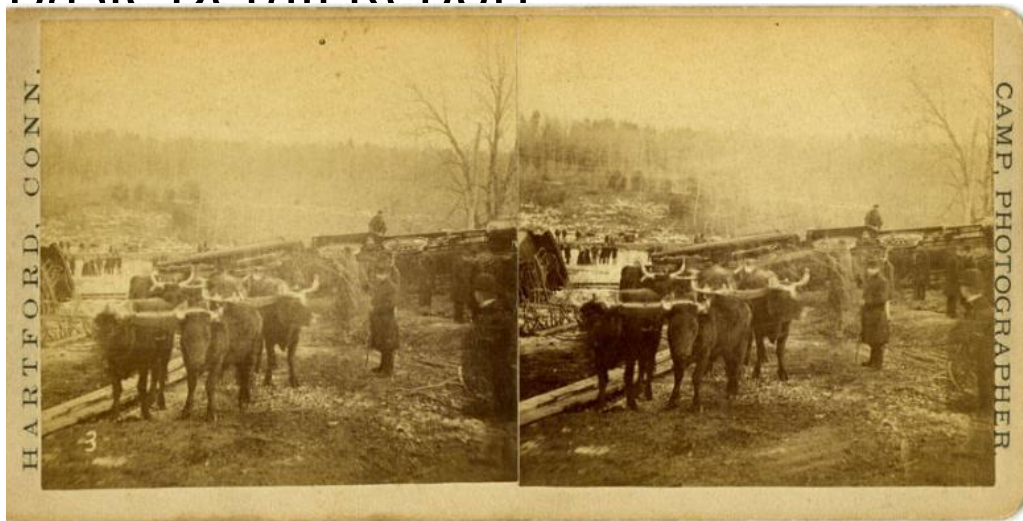


# Basic Detail Report



**Title** Train Wreck, Tariffville, Connecticut: Oxen by Overturned

## **Railroad Cars**

Date 1878

Primary Maker Daniel S. Camp

Medium Photography; albumen prints on paper on cardboard mount

Description A team of yoked oxen stands in the foreground. In the background, a locomotive and two railroad cars lie on their sides on a river bank. Spectators, mostly men wearing dark overcoats, stand on both sides of the river. Two women stand on the far side of the river. A leafless tree is at the right and additional trees are on a hill in the background.

Dimensions Primary Dimensions (image height x width): 3 1/16 x 3 1/8in. (7.8 x 7.9cm) Sheet (height x width): 3 1/16 x 3 1/8in. (7.8 x 7.9cm) Mount (height x width): 3 3/8 x 6 7/8in. (8.6 x 17.5cm)