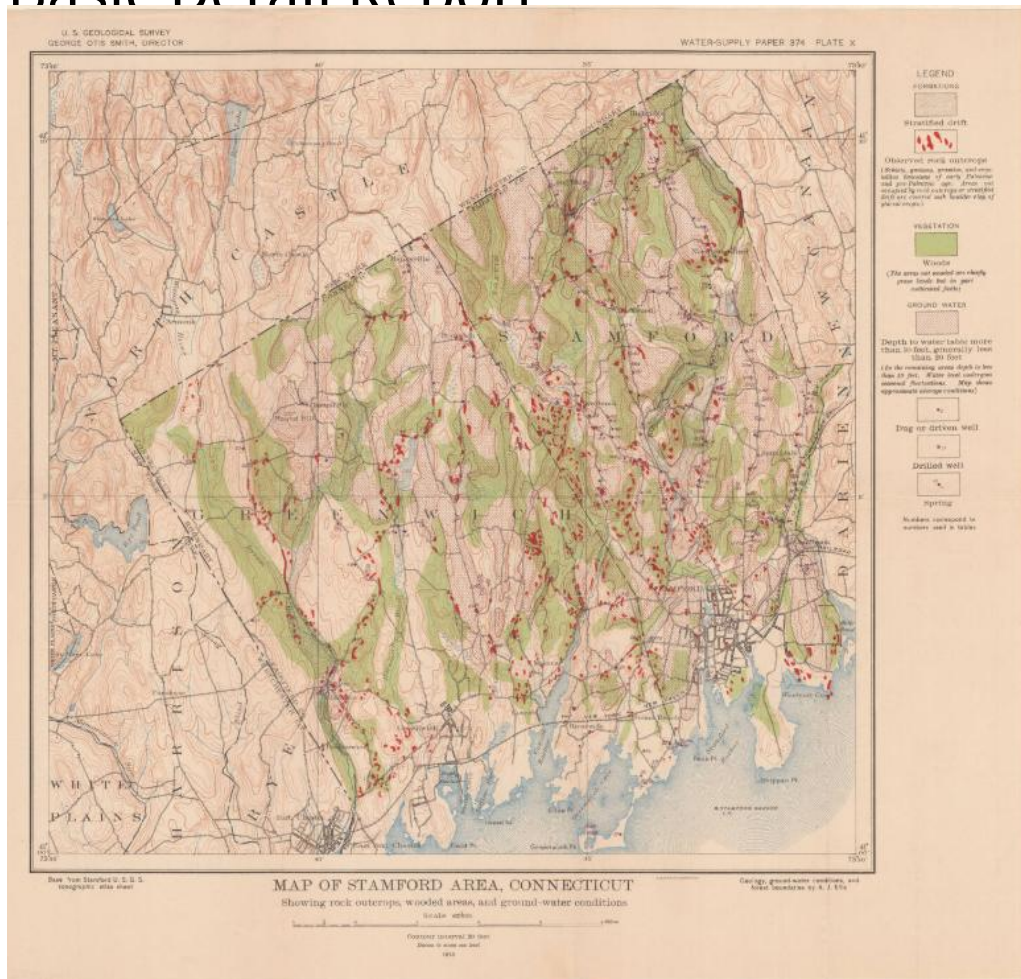


# Basic Detail Report



## Title Map of Stamford Area, Connecticut

Date 1915

Primary Maker Arthur J. Ellis

Medium Lithography; black and colored printer's inks on wove paper

Description Map of Stamford and Greenwich, Connecticut, and the surrounding area, from North Castle to the north, Darien and New Canaan to the east, the Long Island Sound to the south, and White Plains, New York to the west. Colors, lines and symbols are used to denote stratified drift, rock outcroppings, elevation, woods, ground water, dug or driven wells, drilled wells, and springs. There are numbers next to the wells and springs that correspond to numbers

# Basic Detail Report

used in tables (not provided). Blue is used to denote water, including rivers,

reservoirs, lakes and ponds. City streets are shown, with black squares and dots

probably representing buildings. The New York, New Haven and Hartford

Railroad runs along the coast.

Dimensions Primary Dimensions (image height x width): 13 3/8 x 13 7/8in. (34 x

35.2cm) Sheet (height x width): 15 7/8 x 17 1/8in. (40.3 x 43.5cm)