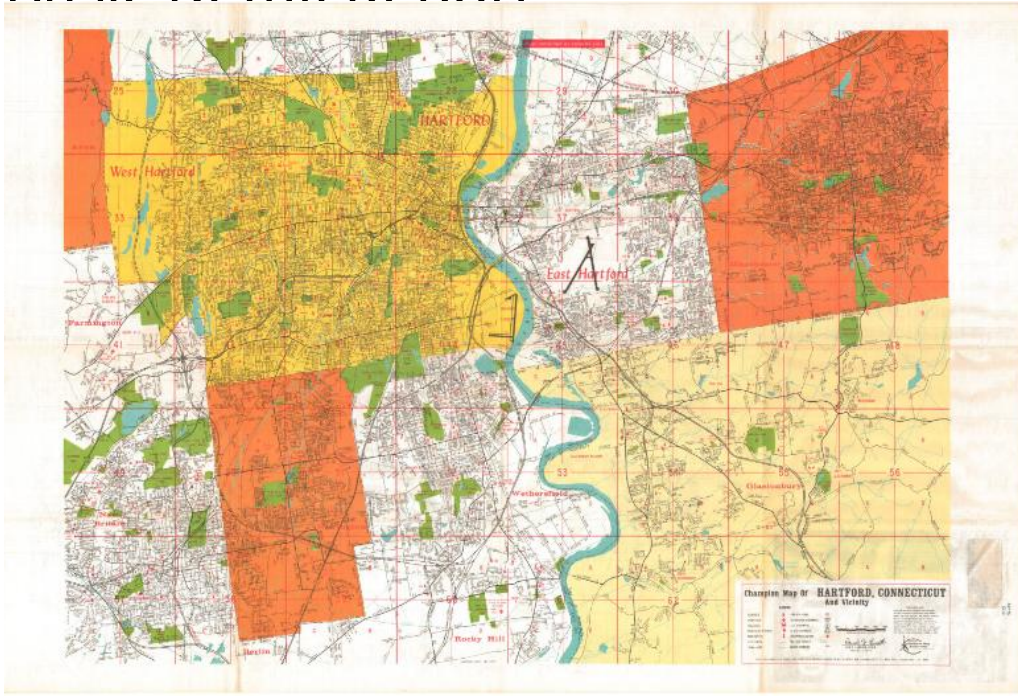


Basic Detail Report



Title Champion Map of Hartford, Connecticut and vicinity

Date 1972-1975

Primary Maker David J. Bennett

Medium Offset lithography; black and colored printer's inks on wove paper

Description Map of Hartford, Connecticut, and some of the surrounding towns, including West Hartford, East Hartford, Manchester, New Britain, Newington, Wethersfield, and Glastonbury, with parts of Avon, Farmington, Berlin, Rock Hill.

The map continues on the back of the sheet, with the towns of Simsbury, Bloomfield, Windsor, East Windsor and South Windsor depicted, with parts of Granby, East Granby, Windsor Locks, Ellington and Vernon. This portion of the map contains less detail than the main one. Both show local roads and highways, but there are more features on the primary map than on the secondary one. Parks, cemeteries and other open spaces are colored green, and schools, hospitals, colleges, points of interest, post offices and shopping centers

Basic Detail Report

are marked with red symbols. Water is colored blue. A street index appears on the back of the sheet.

Dimensions Primary Dimensions (image height x width): 22 7/8 x 32in. (58.1 x 81.3

cm) Sheet (height x width): 25 x 38in. (63.5 x 96.5cm)