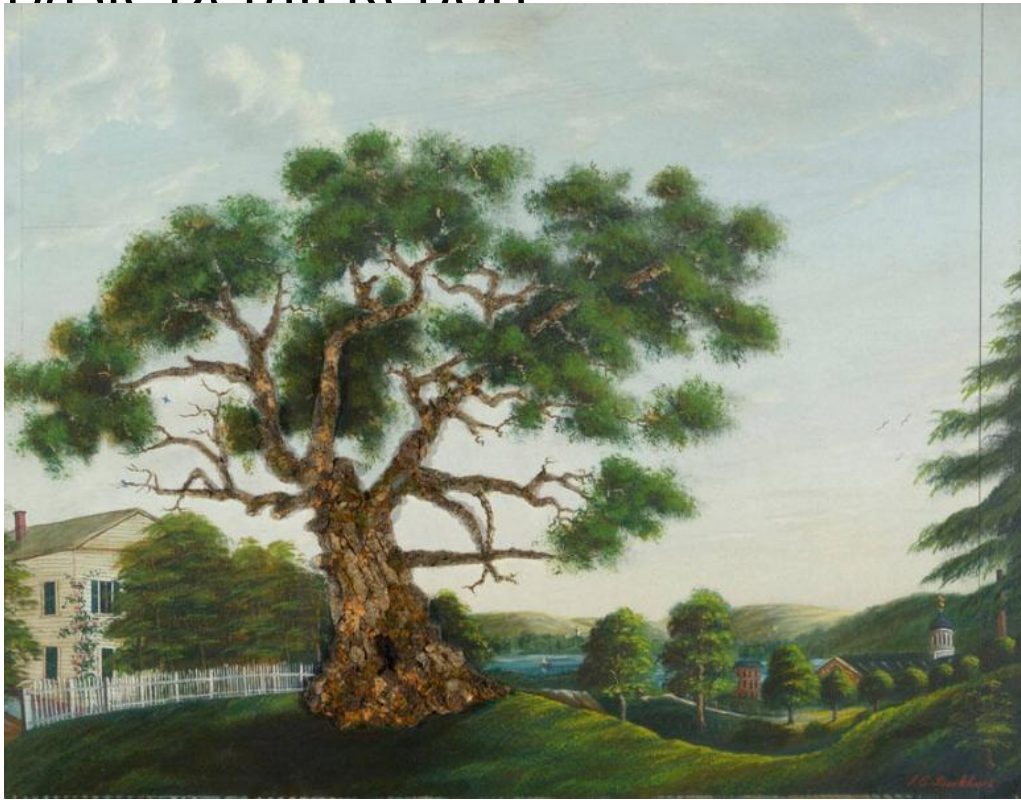


Basic Detail Report



Title Charter Oak

Date about 1859

Primary Maker J. E. Burkhart

Medium Painting; oil and bark on wood in gilt wood frame under glass

Description A large oak tree, meant to be the Charter Oak, with a hole in the trunk is surrounded by a grassy lawn. Behind the tree is a white picket fence, and behind the fence, part of a frame house is visible, mostly obscured by trees.

To the right, the land slopes down to a river, with a small boat on it. Buildings in the background include Colt Firearms Manufactory with its blue onion dome.

Tree bark has been used as the trunk and branches of the tree.

Dimensions Primary Dimensions (panel height x width): 18 x 24in. (45.7 x 61cm)

Frame (height x width x depth): 21 1/4 x 27 1/4 x 1 3/4in. (54 x 69.2 x 4.4cm)