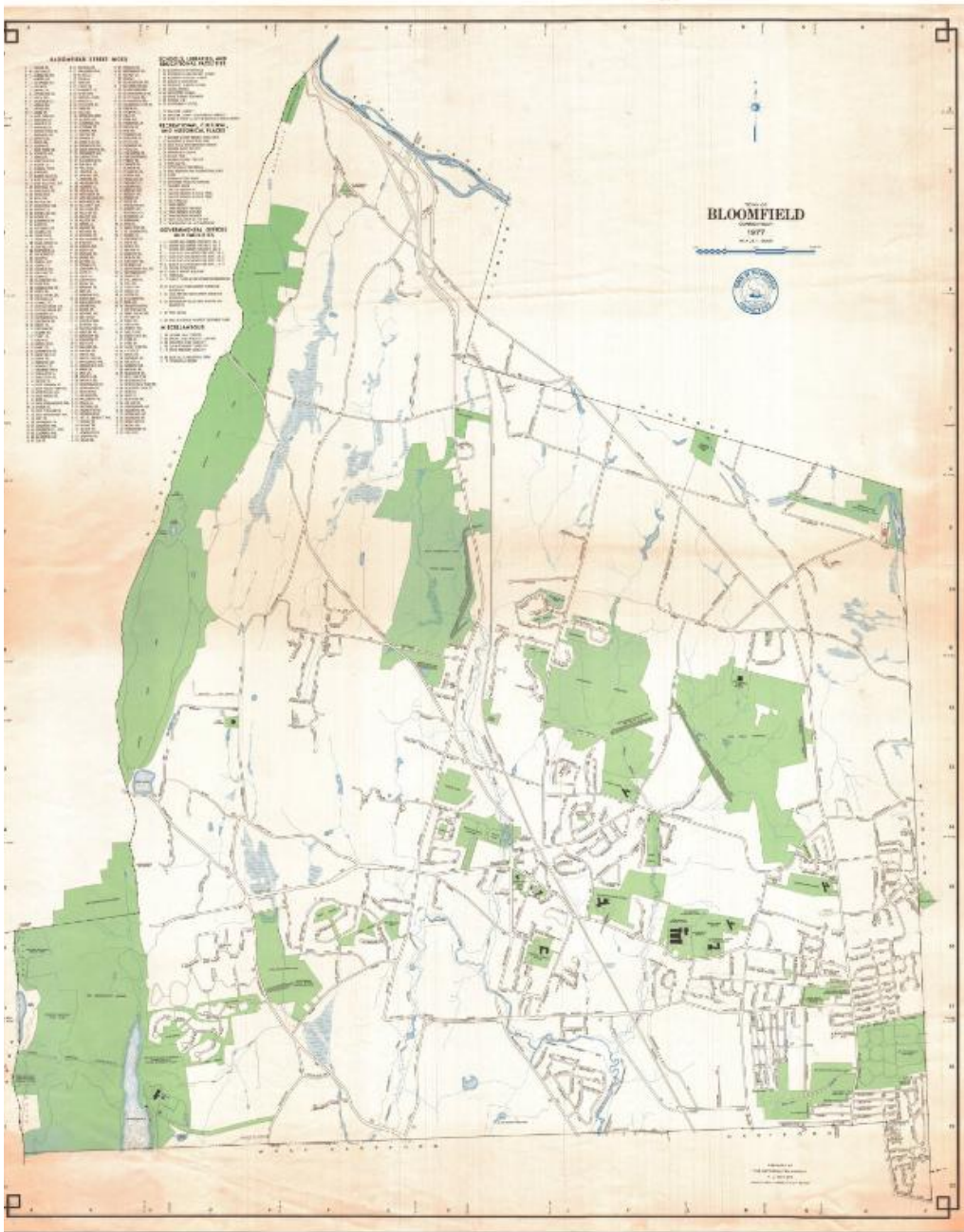


Basic Detail Report



Title Town of Bloomfield, Connecticut

Date 1977

Primary Maker Metropolitan District Commission

Medium Lithography; colored printer's inks on wove paper

Description Map of the town of Bloomfield with East Granby and Windsor to the north, Windsor to the east, Hartford and West Hartford to the south, and

Basic Detail Report

Simsbury and Avon to the west. Street, streams, schools, cemeteries, and an industrial park are shown. Other prominent features include Penwood State Forest, Talcott Mountain, the Talcott Mountain Tunnel, and the Metropolitan District Water Treatment Plant at Reservoir 6. Flood control facilities include the Cold Spring Reservoir, the Tunxis Reservoir, the Wintonbury Reservoir, and the Blue Hills Reservoir, and associated retarding dams and protective dikes. An indexed key at the upper left locates Governmental Facilities, Educational Facilities, Recreational Facilities, Places of Interest, and includes a street index. A compass is at upper right.

Dimensions Primary Dimensions (image height x width): 40 1/8 x 32 3/8in. (101.9 x 82.2cm) Sheet (height x width): 41 x 33 3/8in. (104.1 x 84.8cm)