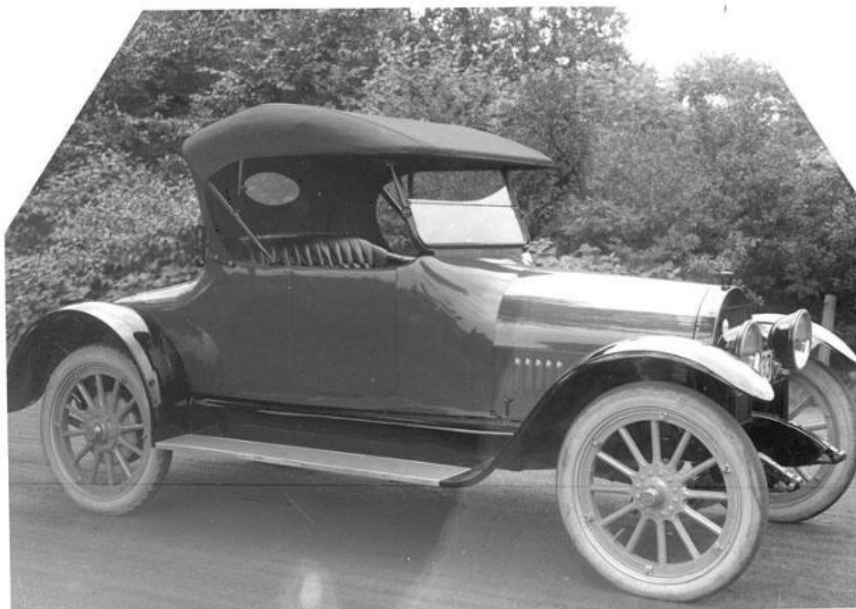


# Basic Detail Report



## Title Two Seat Automobile

Date 1916-1927

Primary Maker William G. Dudley

Medium Photography; gelatin emulsion on glass

Description A two-door passenger automobile is parked on a street with trees in the background. The automobile is a single seater convertible model with the top up.

Dimensions Plate (height x width): 8 x 10in. (20.3 x 25.4cm)