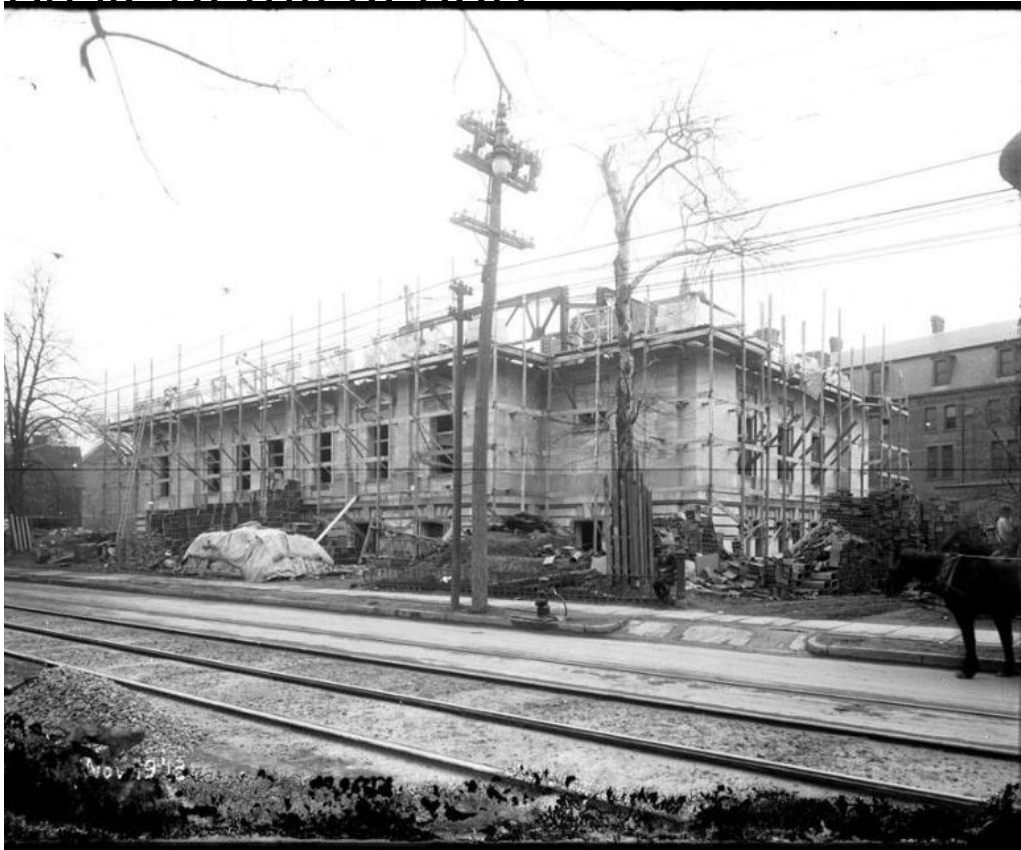


Basic Detail Report



Title Russia Insurance Company Construction Site, November 19, 1913

Date 1913

Primary Maker William G. Dudley

Medium Photography; gelatin emulsion on glass

Description The Russia Insurance Company building at 1565 Broad Street on the corner of Farmington Avenue in Hartford is under construction, surrounded by scaffolding. A horse is at the far right. The Theological Institute of Connecticut buildings are visible in the background. Farmington Avenue, lined with utility poles, and with trolley tracks in the roadbed, is in the foreground.

Dimensions Plate (height x width): 8 x 10in. (20.3 x 25.4cm)