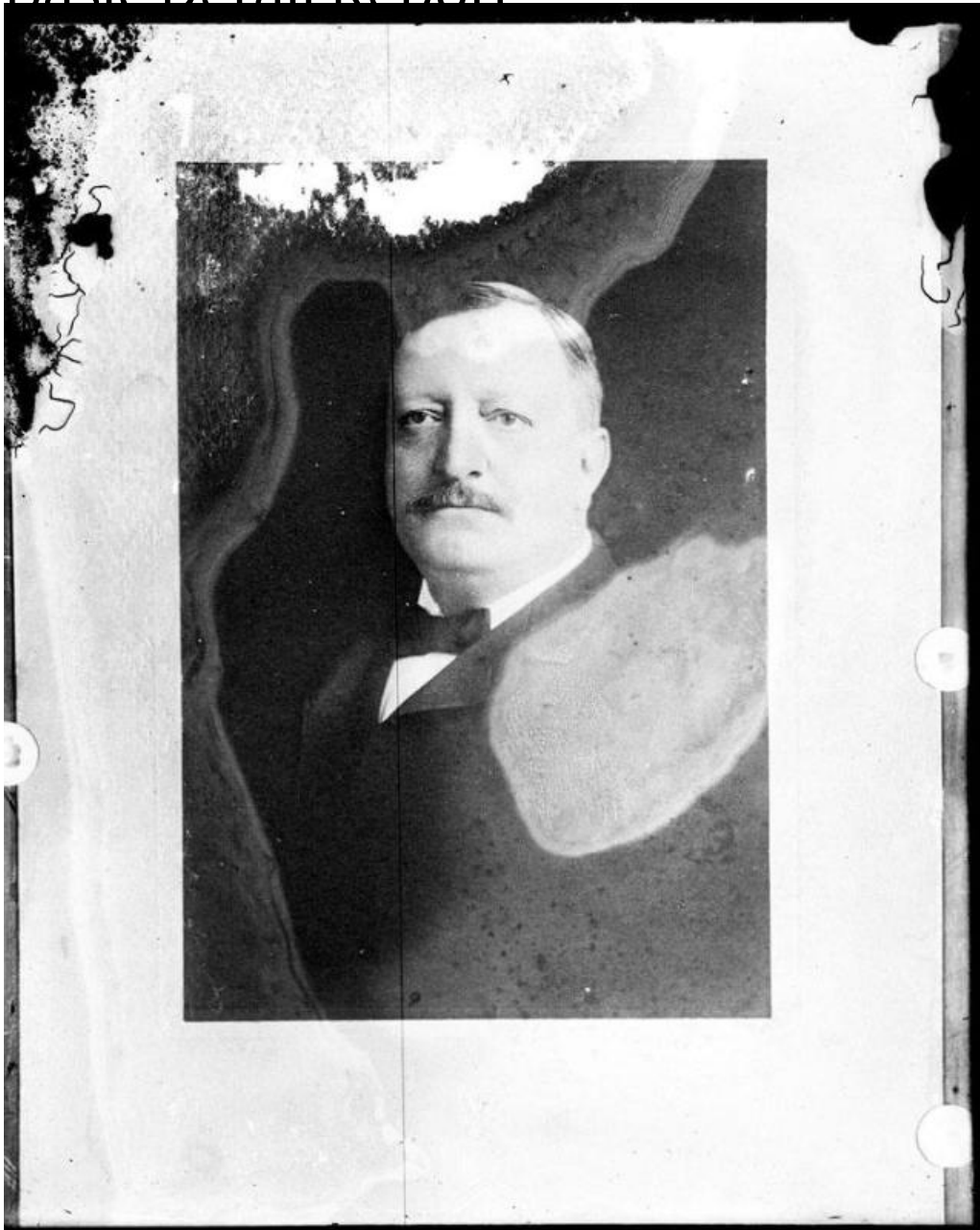


Basic Detail Report



Title Framed Portrait of a Man

Date 1916-1927

Primary Maker William G. Dudley

Medium Photography; gelatin emulsion on glass

Description Copy photograph of a framed half-length portrait photograph of a man.. He is dressed in a suit with a white shirt and a black bow tie. He has a mustache.

Basic Detail Report

Dimensions Plate (height x width): 10 x 8in. (25.4 x 20.3cm)