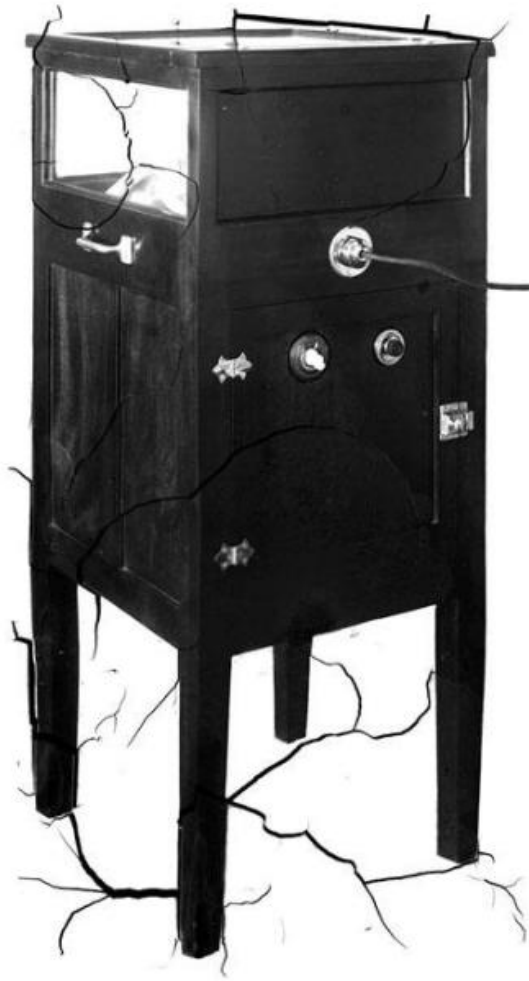


Basic Detail Report



Title Peanut Warmer

Date 1916-1927

Primary Maker William G. Dudley

Medium Photography; gelatin emulsion on glass

Description The back and side views of a peanut warmer are shown. The wooden and glass structure is supported on four legs with two metal hinges. A

Basic Detail Report

metal lock and two dials on the lower half of the warmer are shown. A socket attached to the back with a coil descending outward is visible. A glass rectangular window appears above the handle on the left side.

Dimensions Plate (height x width): 10 x 8in. (25.4 x 20.3cm)