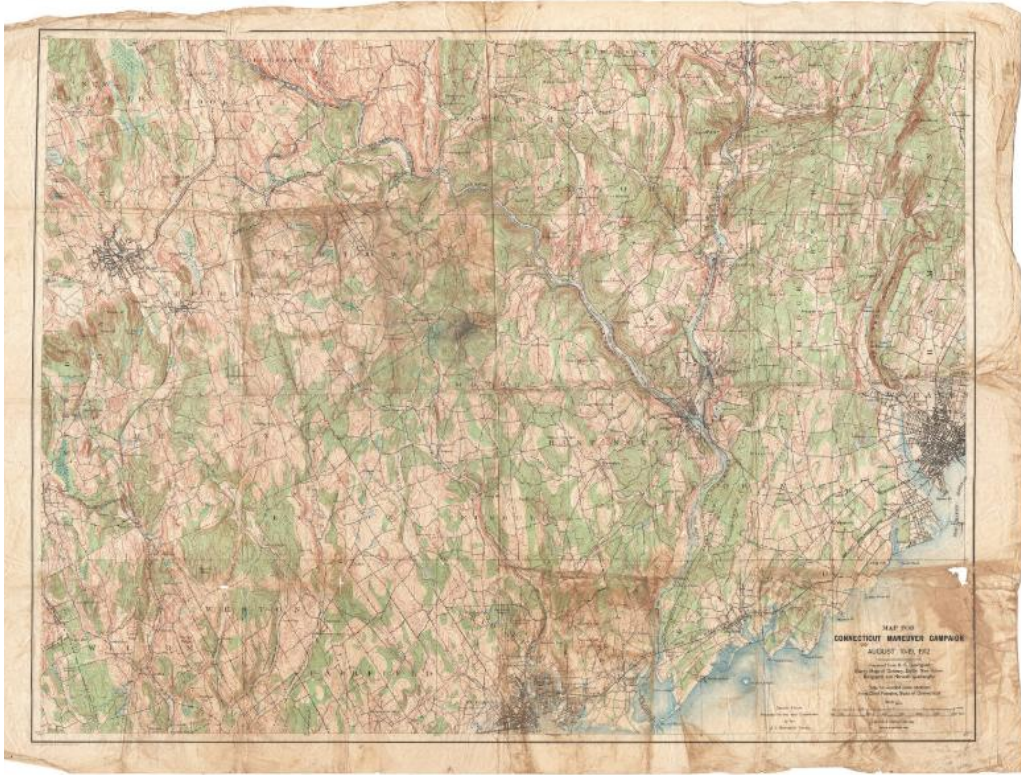


Basic Detail Report



Title Map for Connecticut Manuever Campaign, August 10-19,1912

Date 1912

Primary Maker United States Geological Survey

Medium Lithography; colored printer's inks on wove paper

Description Map of a portion of southwestern Connecticut with New Fairfield, Ridgefield, and Wilton on the west, New Fairfield, Brookfield, Bridgewater, Danbury, Naugatuck, and Prospect on the north, Hamden and New Haven to the east, and New Haven, Orange, Stratford, Bridgeport, Fairfield, Weston, and Wilton to the south. A portion of Long Island Sound is to the southeast. Roads and railroads are indicated. Rivers, marshes, hills, and mountains are shown. Relief is shown by contour intervals. A scale of miles and yards is at lower right.

Dimensions Primary Dimensions (image height x width): 23 3/4 x 31 1/4in. (60.3 x 79.4cm) Sheet (height x width): 25 3/4 x 34 1/2in. (65.4 x 87.6cm)