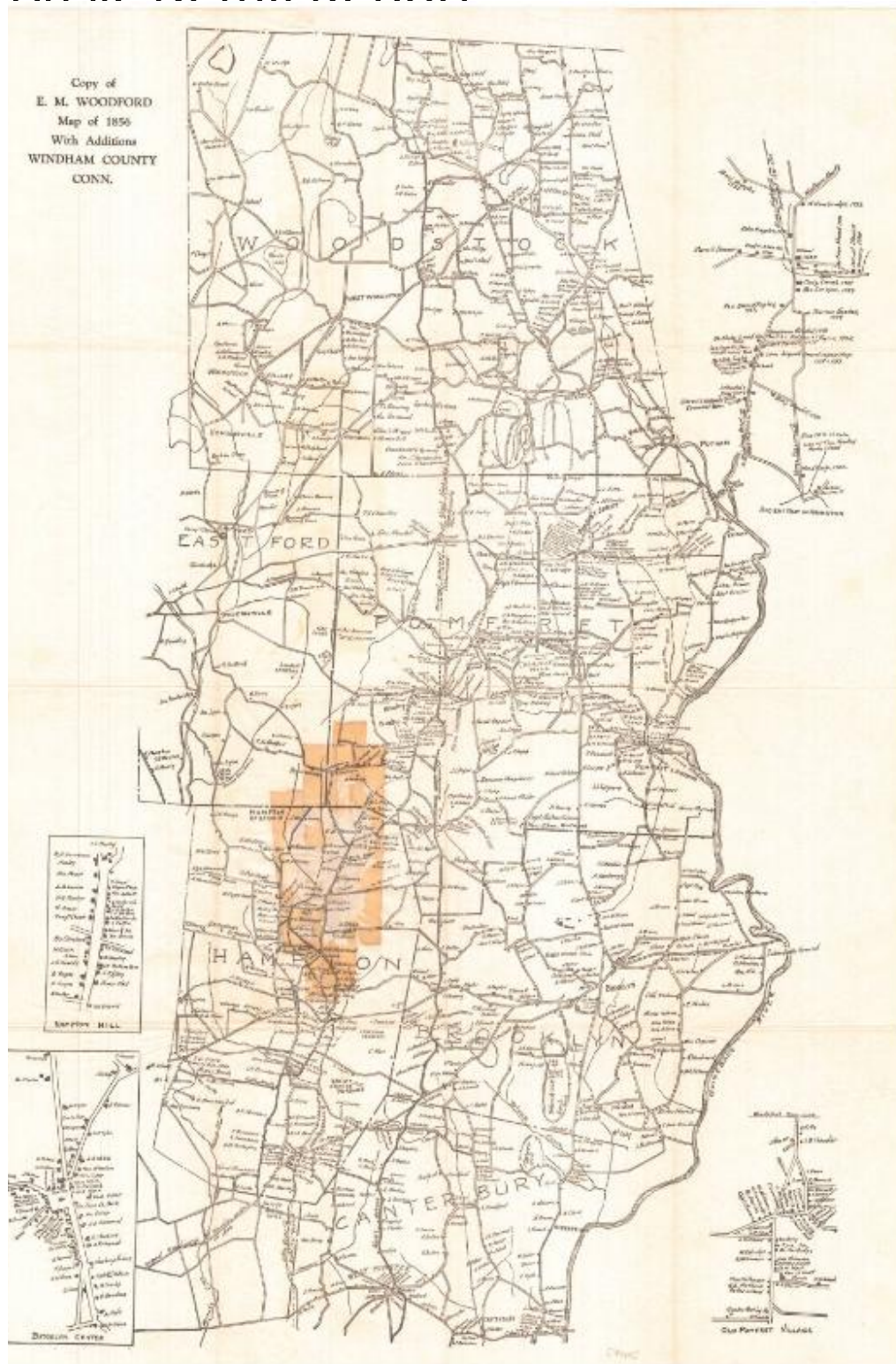


Basic Detail Report



Title Copy of E. M. Woodford map of 1856 with Additions

Date 1928

Primary Maker Unknown

Basic Detail Report

Medium Lithography; black printer's ink on wove paper

Description Map of Windham County, Connecticut. The Massachusetts border, not identified, is to the north. The Quinebaug River is to the east. Towns include Woodstock, Eastford, Pomfret, Hampton, Brooklyn, and Canterbury. Small inset maps include "Ancient Map of Abington," "Hampton Hill," "Brooklyn Center," and "Old Pomfret Village." Names of property owners are shown and some businesses are indicated, including inns, taverns, schools, court houses, blacksmith shops, and sword repair shop. Roads include "Original Road in 1786 - Turnpike Laid out / in 1800," "Nipmunk Path," and "Original Layout of King's Highway." The location of an Indian battle ground is indicated. Rivers, streams, ponds, lakes, and some hills are shown. Elevation is indicated using hachure marks.

Dimensions Primary Dimensions (image height x width): 28 3/4 x 19in. (73 x 48.3 cm) Sheet (height x width): 29 3/4 x 20 1/4in. (75.6 x 51.4cm)