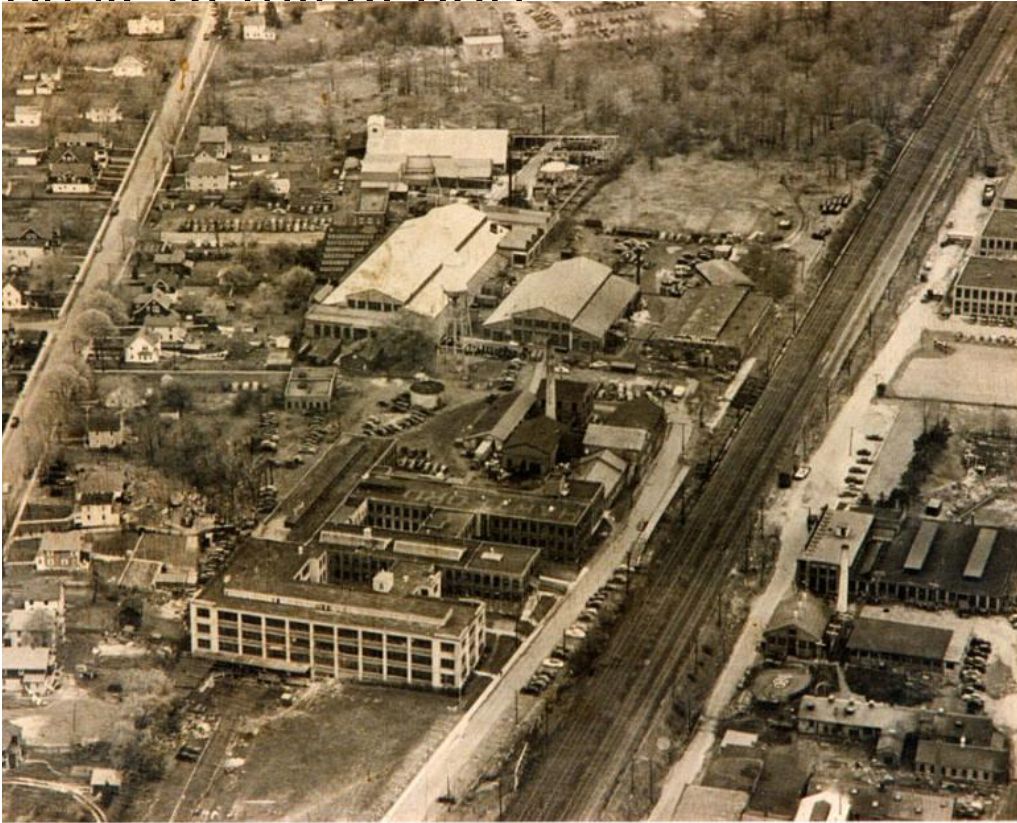


Basic Detail Report



Title Aerial View of Hartford Industrial Sites

Date after 1964

Primary Maker Unknown

Medium Photography; gelatin silver print on paper

Description Aerial view of industrial, commercial, and residential buildings. The word "HARTFORD" is painted on the roof of one large factory building. Other factory buildings have clerestory windows and water towers. Some buildings have smokestacks. Automobiles are parked in parking lots and along two major streets. Houses line both sides of the street at the left. Trees and an open lot are in the background.

Dimensions Primary Dimensions (image height x width): 10 7/8 x 14in. (27.6 x 35.6 cm) Sheet (height x width): 10 7/8 x 14in. (27.6 x 35.6cm)