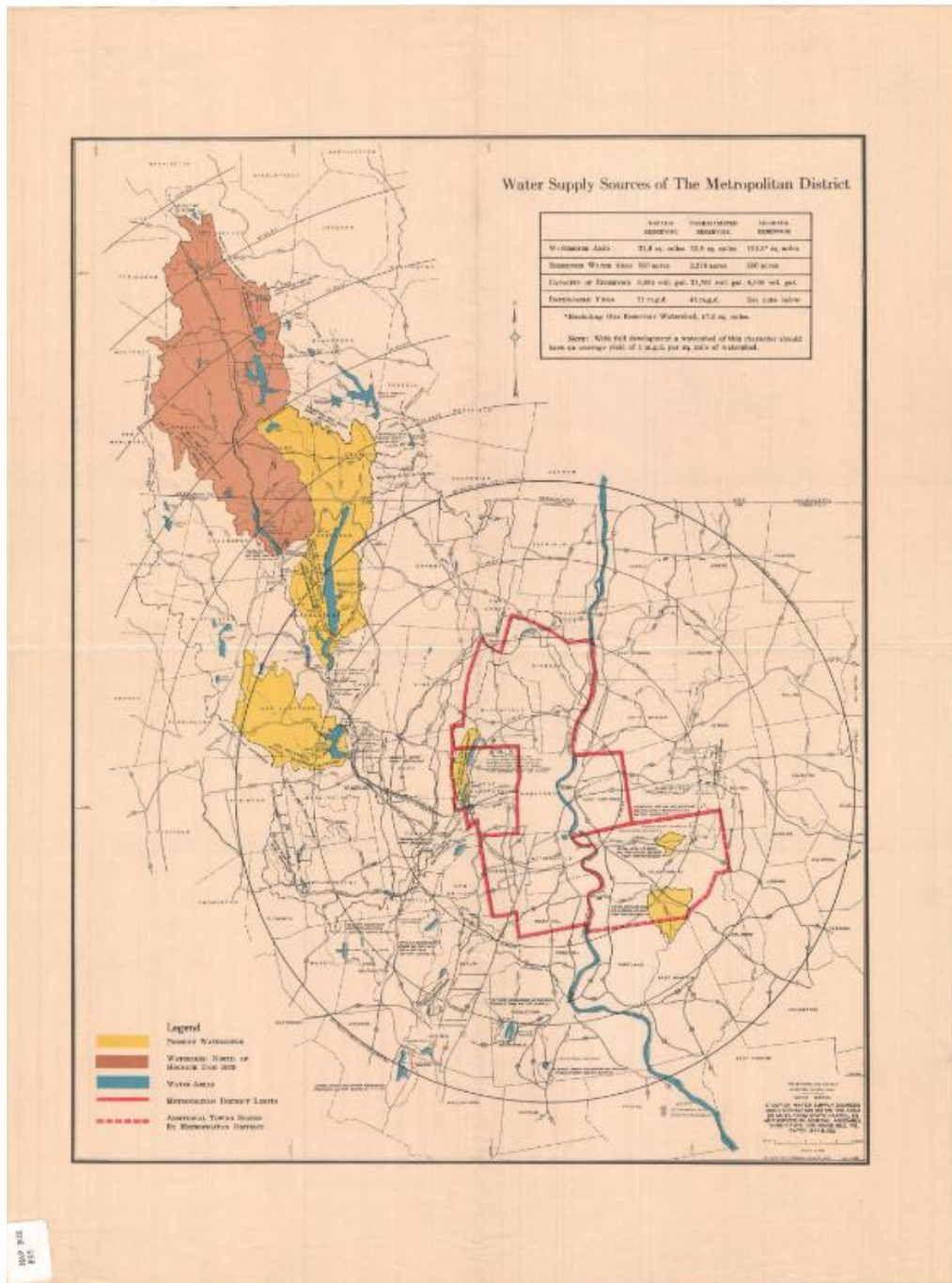


# Basic Detail Report



## Title Water Supply Sources of The Metropolitan District

Date 1946

Primary Maker Metropolitan District Commission

Medium Lithography; black and colored printer's inks on wove paper

# Basic Detail Report

Description Map of northwestern and central Connecticut and southwestern

Massachusetts. A thick red line indicates the boundaries of the Metropolitan

District, within which are Bloomfield, Windsor, West Hartford, Hartford, East

Hartford, Wethersfield, Rocky Hill, Glastonbury and Newington. Yellow and

brown are used to show the locations of watersheds. Concentric circles in five-

mile increments radiate out from the Capitol. The Connecticut River and other

water areas are shown in blue. In the top right corner is a table showing the sizes

of the Nepaug, Barkhamsted and Hogback reservoirs.

Dimensions Primary Dimensions (image height x width): 16 7/8 x 13 1/8in. (42.9 x

33.3cm) Sheet (height x width): 21 x 16in. (53.3 x 40.6cm)