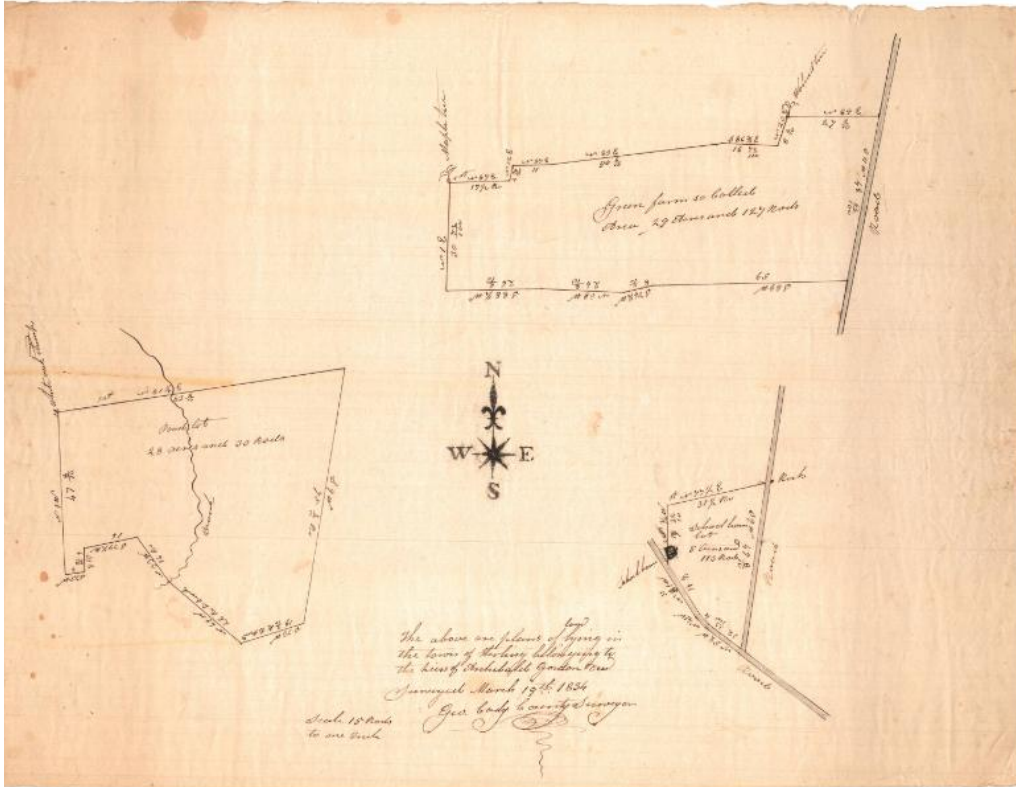


Basic Detail Report



Title The above are plans of land lying in the town of Sterling
belonging to the heirs of Archibald Gordon

Date 1834

Primary Maker George Cady

Medium Drawing; black ink on wove paper

Description Three plat maps on one sheet of paper, depicting a farm lot, a schoolhouse lot and a pond lot. Geographic coordinates are given, as are dimensions in feet (presumably) and area in acres and rods. The only building depicted is the school house.

Dimensions Primary Dimensions (image height x width): 15 3/8 x 20 1/4in. (39.1 x 51.4cm) Sheet (height x width): 15 3/8 x 20 1/4in. (39.1 x 51.4cm)