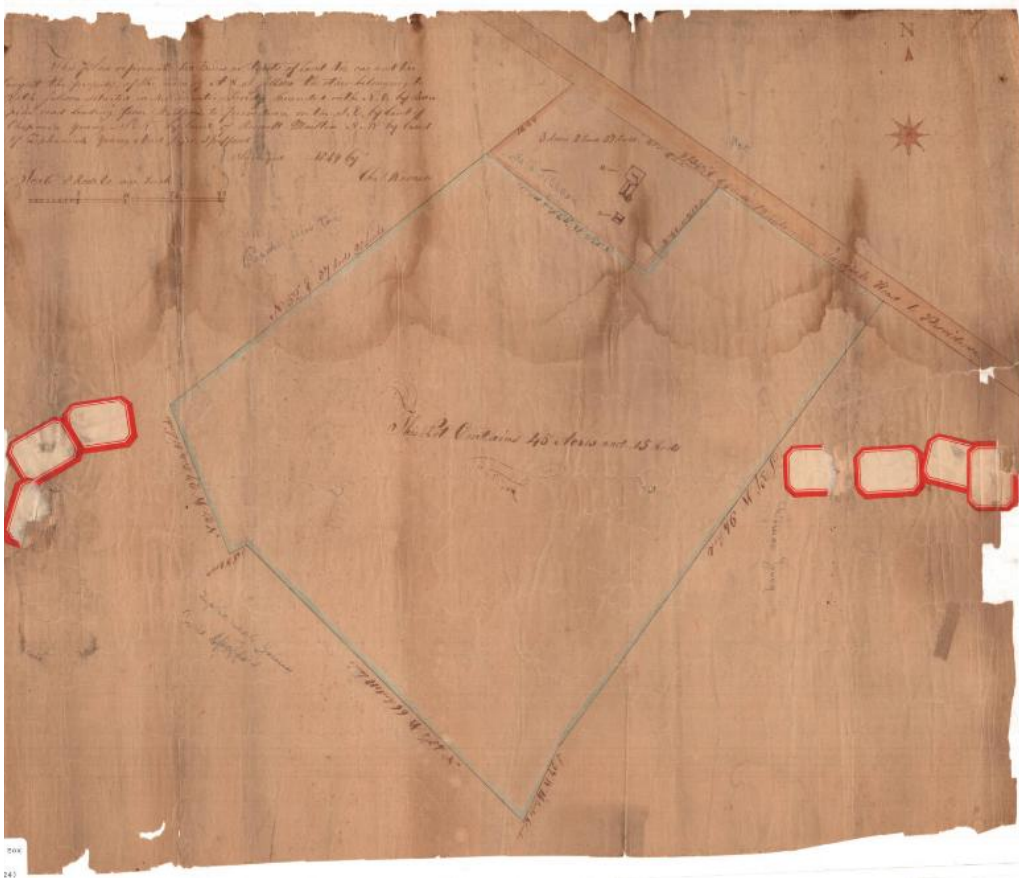


Basic Detail Report



Title This plan represents two pieces or tracts of land viz one and the largest the property of A. & S. Jillson, the other belonging to Seth Jillson situated in Willimantic...

Date 1849

Primary Maker Charles Warner

Medium Drawing; black ink and blue watercolor on wove paper

Description Manuscript map of two plots of land in Willimantic, Connecticut.

Both pieces of land abut the turnpike road to Providence. Geographic coordinates and measurements in rods and links are provided for each of the property lines. In the smaller plot of land, a house and barn are shown.

Basic Detail Report

Dimensions Primary Dimensions (image height x width): 17 7/8 x 21 3/4in. (45.4 x 55.2cm) Sheet (height x width): 17 7/8 x 21 3/4in. (45.4 x 55.2cm)