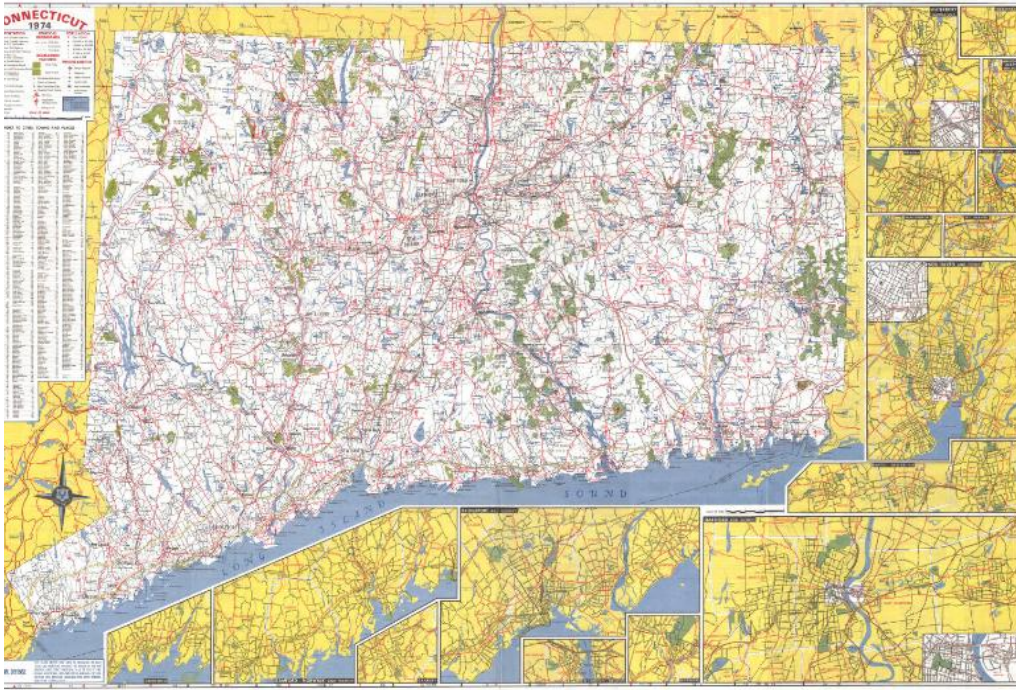


Basic Detail Report



Title 1974 Map of Connecticut

Date 1974

Primary Maker Connecticut Department of Transportation

Medium Lithography; black and colored printer's inks on wove paper

Description Map of Connecticut, from Massachusetts to the north, Rhode Island to the east, the Long Island Sound to the south, and New York State to the west.

A number of different types of roads are depicted, including multilane highways with and without tolls and dividers, two-lane highways and interchanges. State parks and forests are marked in green, and symbols denote the locations of rest areas, points of interest, boat launching sites, public fishing areas, ski areas and hunting areas. Airports, heliports, yacht clubs, fish hatcheries and information centers are also denoted with symbols. Cities are marked with circles of sizes that correspond to their population sizes. Vignettes of Waterbury, Torrington, Ansonia/Derby/Shelton, Meriden, Middletown, Wallingford, Willimantic, New

Basic Detail Report

Haven, Bristol/New Britain, Hartford, Bridgeport, Norwich, New London/Groton,

Danbury, Stamford/Norwalk, and Greenwich appear around the right and

bottom borders. On the back of the map are 36 color photographs of different

parts of Connecticut, showing its natural features, coastal scenes, festivals, and

historic sites. A map of the state's Charter Oak Trail, with numbered points of

interest along the way, is shown above information detailing Connecticut's

outdoor recreational sites and facilities. Under the heading "Convenient

Information Listing," state parks, forests and monuments are listed, along with

information about tolls paid on highways, bridges, and ferries; a guide to

expressway service signs; and information about railroad passenger stations. A

mileage chart is located at the bottom of the sheet.

Dimensions Primary Dimensions (image height x width): 23 1/4 x 35 1/4in. (59.1 x

89.5cm) Sheet (height x width): 24 x 36in. (61 x 91.4cm)