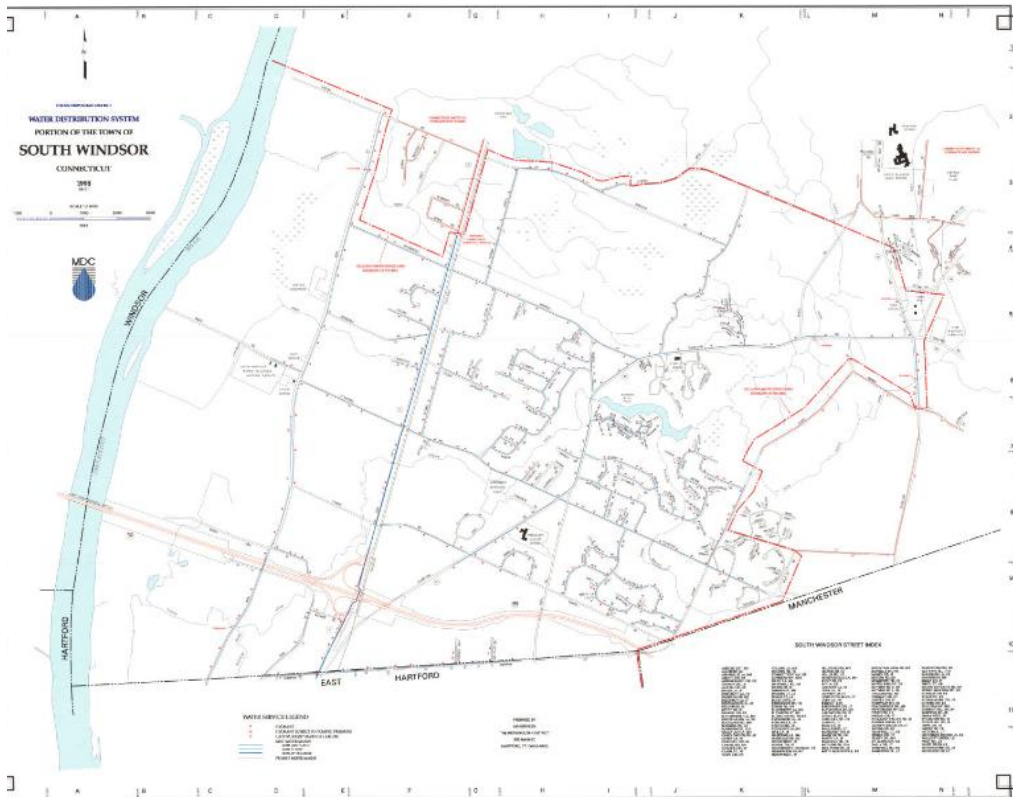


# Basic Detail Report



## Title Portion of the Town of South Windsor Water Distribution System

Date 1998

Primary Maker Metropolitan District Commission

Medium Lithography; black and colored printer's inks on wove paper

Description Map of a portion of the town of South Windsor with Brickyard Pond, Wapping School, and the South Windsor High School to the north; the new Wapping Cemetery and Grandview Drive to the east; Interstate 291, Manchester and East Hartford to the south; and the Connecticut River, Hartford, and Windsor to the west. Streets, railroads, streams, and ponds are shown with water mains indicated in blue. The South Windsor Water Pollution Control Facility is on Vibert Road to the west. A Water Service Legend at lower right provides a key to hydrants, hydrants subject fo pumped pressure, gate valves

# Basic Detail Report

(sixteen inch main or larger), MDC water mains (less than six inches in diameter, six to twenty-three inches in diameter, and twenty-four inches or larger in diameter), private water mains, limit of high service, and limit of high service second stage. Hydrants located on private water mains are not shown. An index of South Windsor streets is at lower right. The boundary of the MDC is indicated to the north and east.

Dimensions Primary Dimensions (image height x width): 24 x 31 1/8in. (61 x 79.1 cm) Sheet (height x width): 24 3/4 x 31 7/8in. (62.9 x 81cm)