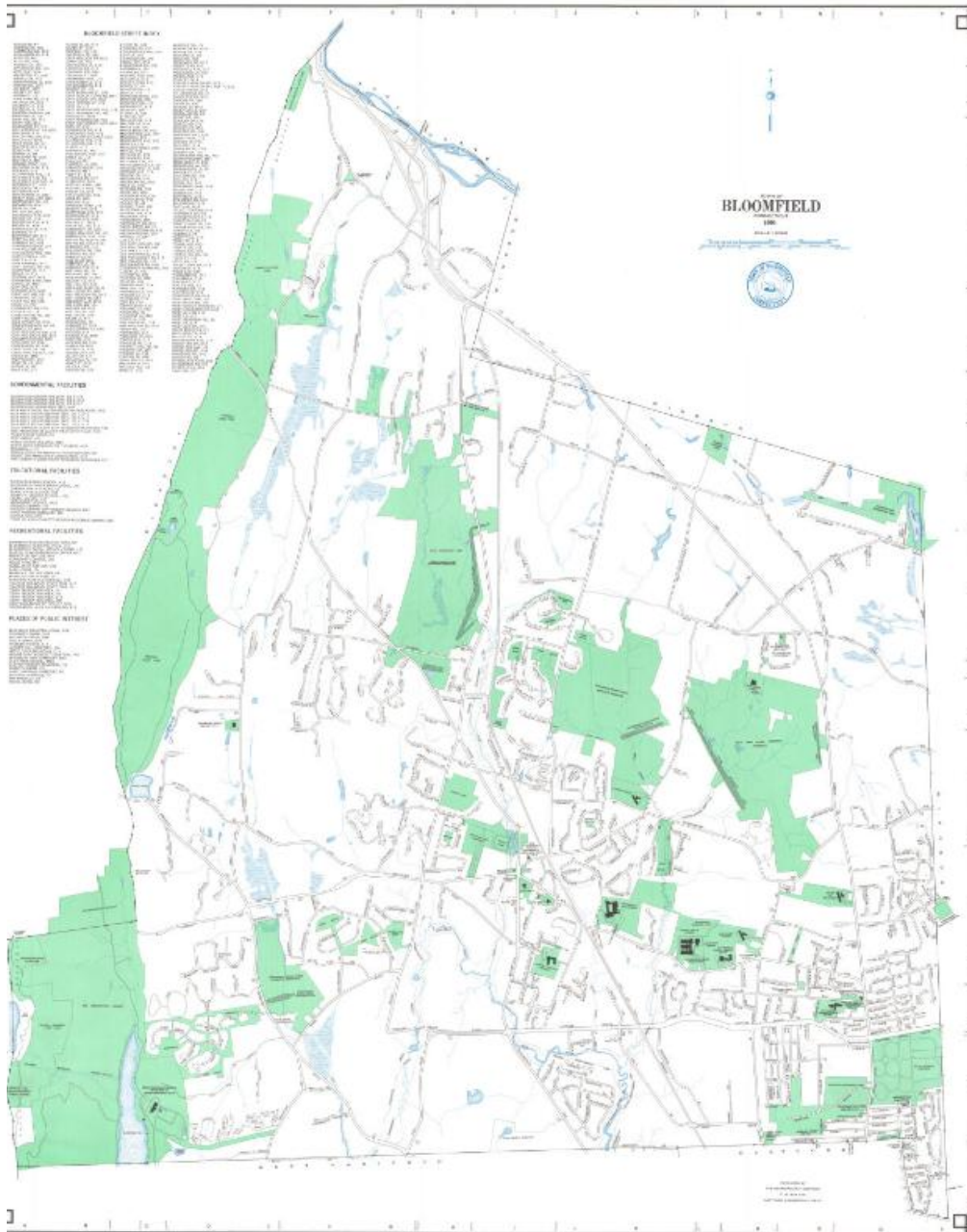


Basic Detail Report



Title Town of Bloomfield, Connecticut

Date 1995

Primary Maker Metropolitan District Commission

Medium Lithography; black and colored printer's inks on wove paper

Description Map of the town of Bloomfield with East Granby and Windsor to the north, Windsor to the east, Hartford and West Hartford to the south, and

Basic Detail Report

Simsbury and Avon to the west. Street, streams, schools, cemeteries, and an

industrial park are shown. Other prominent features include Penwood State

Forest, Talcott Mountain, the Talcott Mountain Tunnel, and the Metropolitan

District Water Treatment Plant at Reservoir 6. Flood control facilities include the

Cold Spring Flood Water Retention Reservoir, the Tunxis Flood Water Retention

Reservoir, the Wintonbury Flood Water Retention Reservoir, and the Blue Hills

Flood Water Retention Reservoir, and associated retarding dams and protective

dikes. An indexed key at the right locates Governmental Facilities, Educational

Facilities, Recreational Facilities, Places of Interest, and includes a street index.

A compass is at upper right.

Dimensions Primary Dimensions (image height x width): 40 1/4 x 32 5/8in. (102.2

x 82.9cm) Sheet (height x width): 40 3/4 x 32 7/8in. (103.5 x 83.5cm)