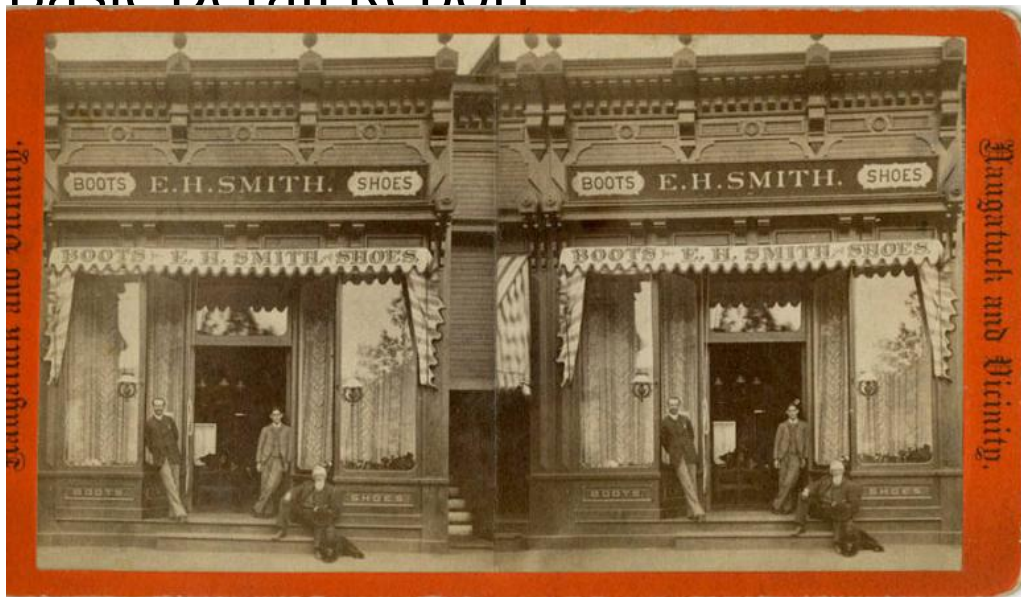


Basic Detail Report



Title Miscellaneous Connecticut Businesses and Buildings

Date 1860-1900

Primary Maker Alfred A. Adt

Medium Photography; albumen prints on paper on cardboard mounts

Description Subjects include buildings throughout Connecticut, including a court house (possibly in Bridgeport), a Congregational Church and "Ned's Store" in West [illegible name], and stores with signs that read 'Stoves and Pipes,' "Cady and Gorman," and "E.H. Smith Boots and Shoes." A horse-drawn grocery wagon is in front of one of the stores. Snow is on the ground in one photograph. Part of the John S. Craig Collection.

Dimensions Primary Dimensions (image height x width): 4 x 7in. (10.2 x 17.8cm)

or smaller Sheet (height x width): 4 x 7in. (10.2 x 17.8cm) or smaller Mount

(height x width): 4 x 7in. (10.2 x 17.8cm) or smaller