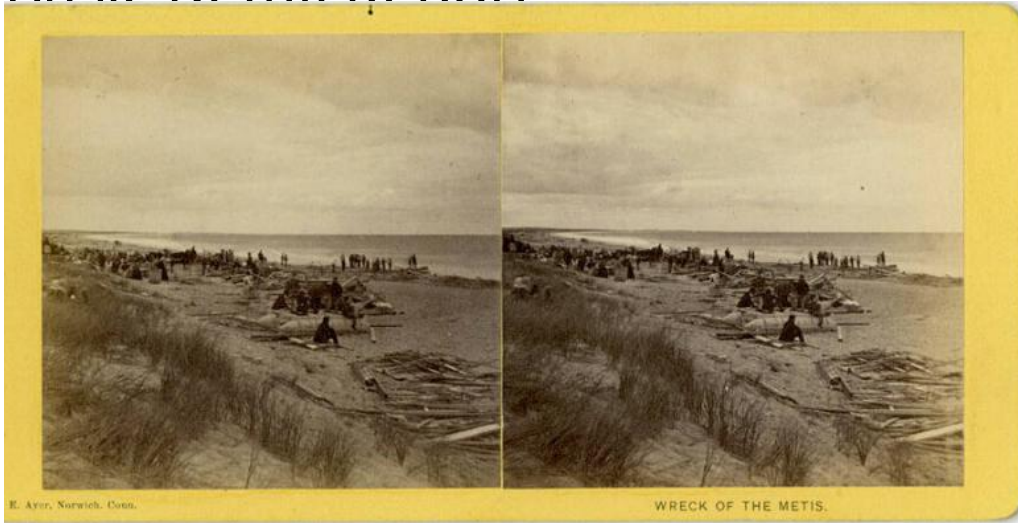


Basic Detail Report



Title Maritime and Coastal Views

Date 1860-1900

Primary Maker Elisha Ayer

Medium Photography; albumen prints on paper on cardboard mounts

Description Identified subjects include a view of the wreck of the Metis, Eastern Point, Groton, and a view of Charles Island, off Milford, Connecticut. Steamboats at a dock include the River Queen. Sailing vessels appear in some photographs.

Part of the John S. Craig Collection.

Dimensions Primary Dimensions (image height x width): 4 x 7in. (10.2 x 17.8cm)

or smaller Sheet (height x width): 4 x 7in. (10.2 x 17.8cm) or smaller Mount

(height x width): 4 x 7in. (10.2 x 17.8cm) or smaller