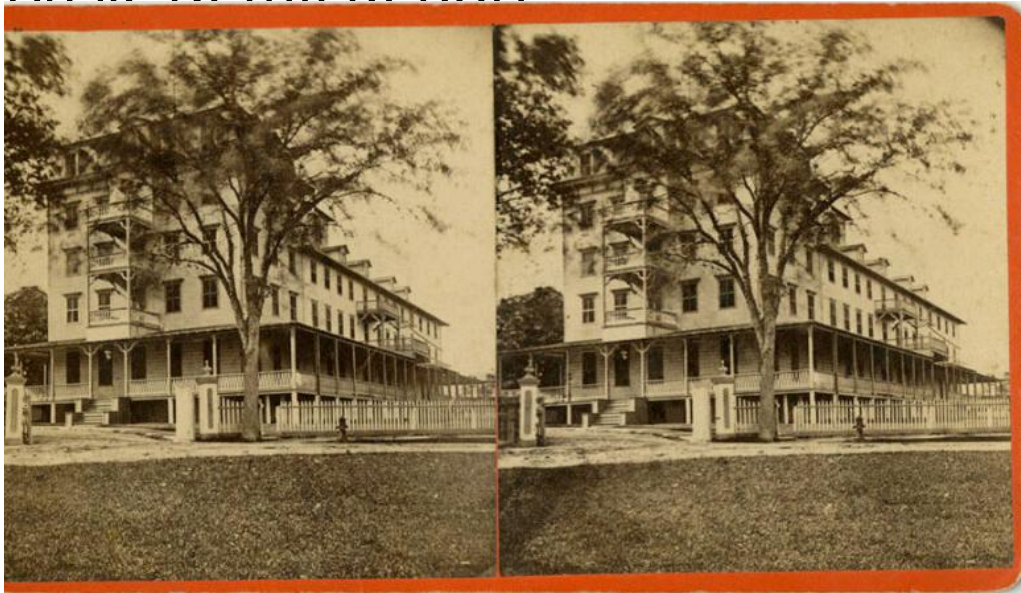


Basic Detail Report



Title Views of New London

Date 1860-1890

Primary Maker Bishop & Kenyon

Medium Photography; albumen prints on paper on cardboard mounts

Description Views include the New London Point Lighthouse with the rocky shoreline in the foreground, a view of the Pequot House, a large summer hotel, and a dock that may be part of the hotel ground. Other buildings include a church, and a cash store. Streets are lined with houses and commercial buildings. One street is lined with elm trees. The harbor is visible in the background of one photograph. Part of the John S. Craig Collection.

Dimensions Primary Dimensions (image height x width): 4 x 6 3/16in. (10.2 x 15.7 cm) or smaller Sheet (height x width): 4 x 6 3/16in. (10.2 x 15.7cm) or smaller

Mount (height x width): 4 x 6 3/16in. (10.2 x 15.7cm) or smaller