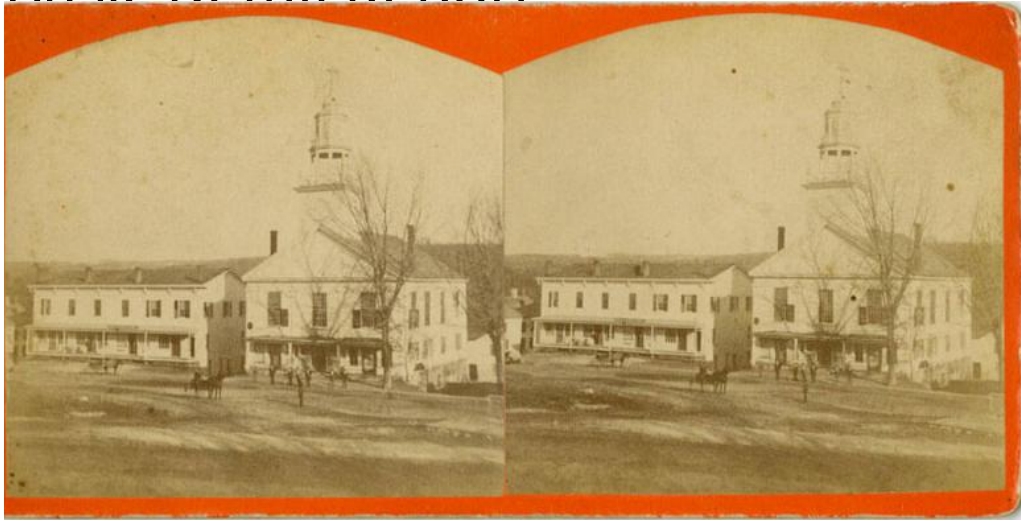


# Basic Detail Report



## Title Views of Stafford Springs

Date 1866-1875

Primary Maker George W. Wilcox

Medium Photography; albumen prints on paper on cardboard mounts

Description Photographs include a view of people standing beside a covered spring. The same spring house appears in the foreground of a second photograph, which has a hotel in the background. A man driving a pony cart may be in front of the hotel. Other photographs depict houses, churches, a factory with a stream and mill pond, a group of soldiers gathered on what appears to be a town green, and general views of the town and surrounding landscape. Part of the John S. Craig Collection.

Dimensions Primary Dimensions (image height x width): 2 15/16 x 3 1/8in. (7.5 x 7.9cm) Sheet (height x width): 2 15/16 x 3 1/8in. (7.5 x 7.9cm) Mount (height x width): 3 3/8 x 6 7/8in. (8.6 x 17.5cm)