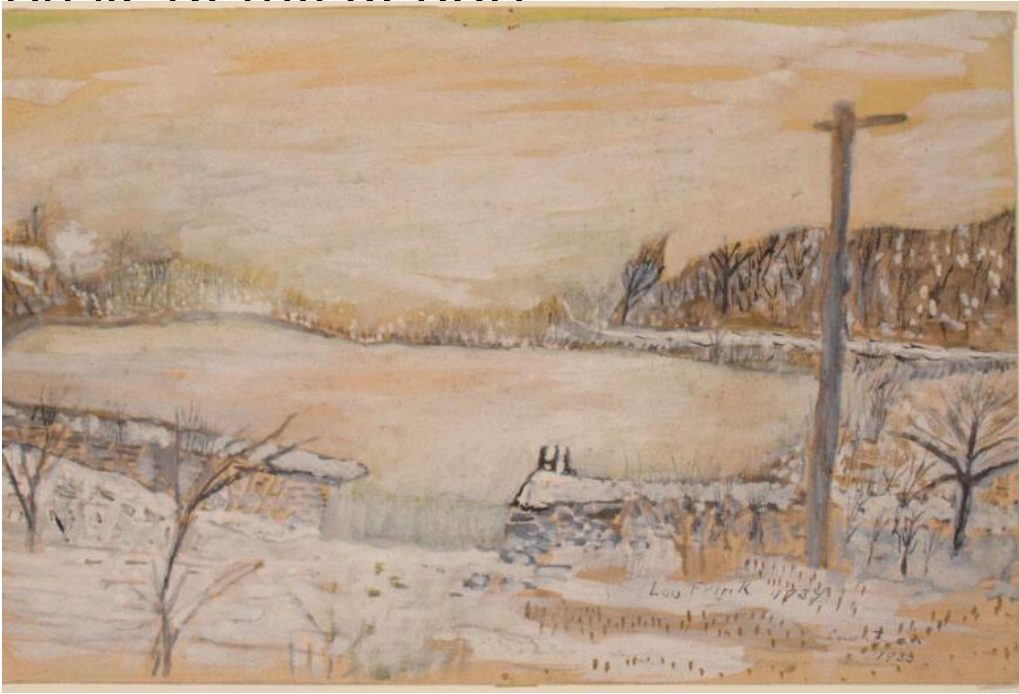


Basic Detail Report



Title Lyman Pond

Date 1933-1934

Primary Maker Louis Grosvernor Frink

Medium Drawing; watercolor and gouache on wove paper

Description Water flows out of an ice-covered pond over a low stone dam.

Leafless trees surround the pond A low hill rises in the right background.

Leafless bushes and a utility pole are in the foreground.

Dimensions Primary Dimensions (image height x width): 8 1/4 x 12 3/4in. (21 x 32.4cm) Sheet (height x width): 8 1/4 x 12 3/4in. (21 x 32.4cm)