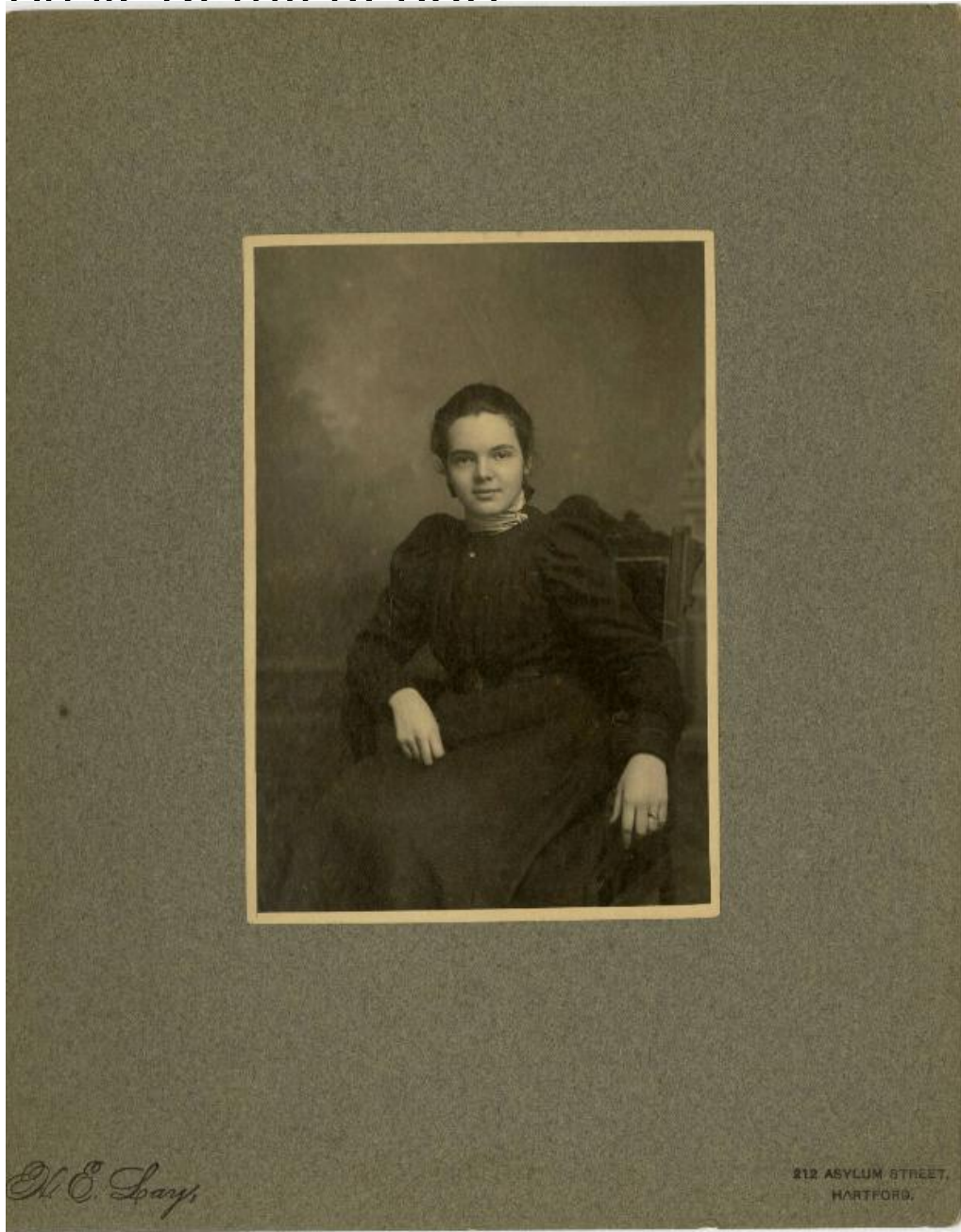


Basic Detail Report



Title Estella Lay Colton

Date early 20th century

Primary Maker Horace E. Lay

Medium Photography; gelatin silver prints on paper, tinytype on laquered iron plate, some on cardboard mounts or in cardboard folders

Basic Detail Report

Description Formal studio portraits of a woman, from youth to middle age. In

one portrait, she is seated, with a man and a young girl. The man has a

mustache. The girl has a bow in her hair. The woman has a ring on her finger.

Dimensions Primary Dimensions (image height x width): 6 3/4 x 4 1/2in. (17.1 x

11.4cm) Folder (height x width): 11 1/4 x 7 1/4in. (28.6 x 18.4cm)