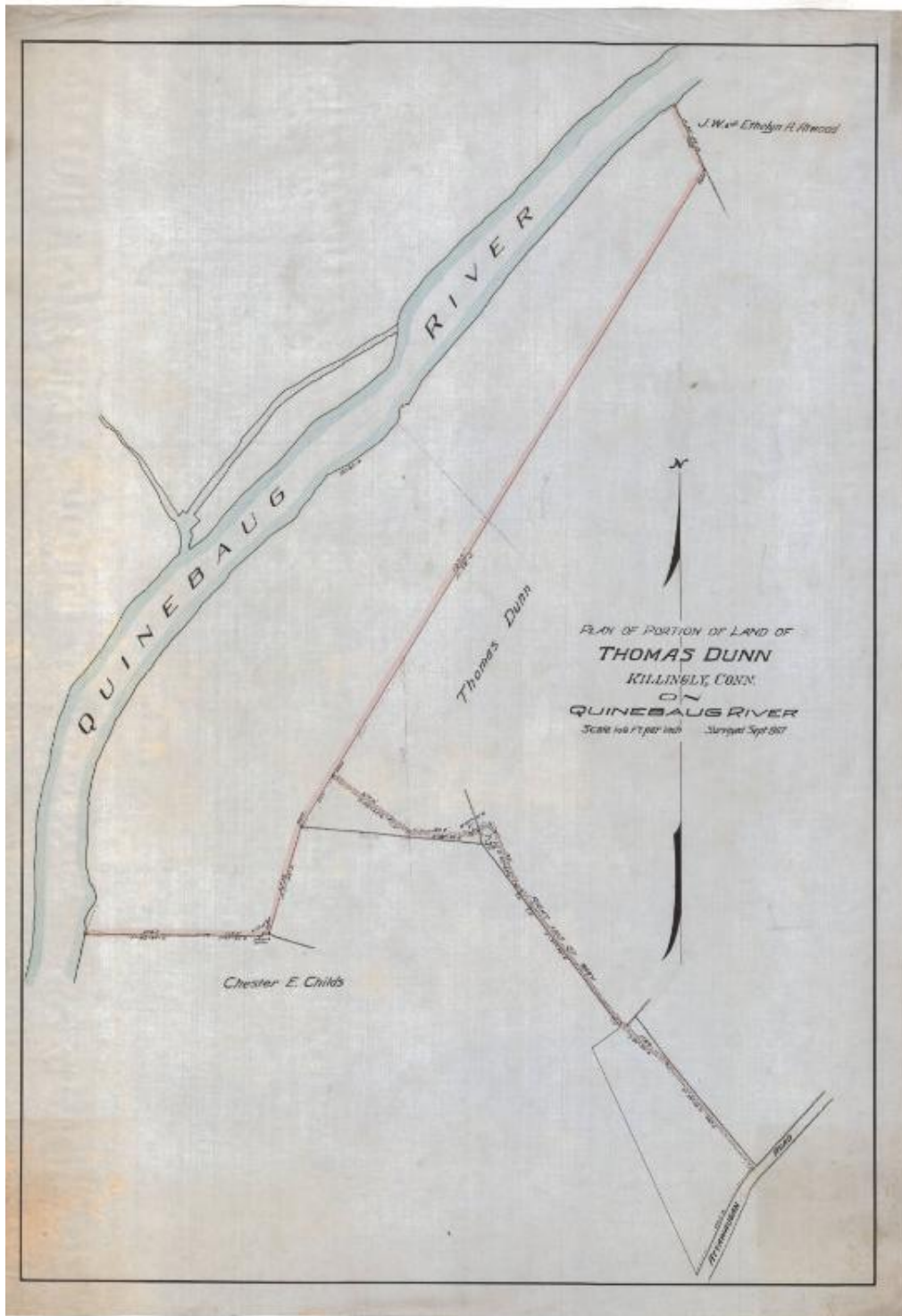


Basic Detail Renort



**Title Plan of Portion of Land of Thomas Dunn, Killingly, Connecticut,
on Quinebaug River**

Date 1907

Primary Maker Erastus Worthington

Basic Detail Report

Medium Drawing; ink, pencil and watercolor on drafting linen

Description Map of parts of several plots of land along the Quinebaug River in Killingly, Connecticut. To the north is part of J.W. and Ethelyn A. Atwood's land, southeast of which is Thomas Dunn's land. Southeast again is Chester E. Child's land. Between these three plots of land and the river is unlabeled land. At the bottom right corner of the map is Attawaugan Road. Between it and Thomas Dunn's land boundary is a right of way that abuts with Childs' land.

Dimensions Primary Dimensions (image height x width): 35 1/8 x 24 3/8in. (89.2 x 61.9cm) Sheet (height x width): 37 1/8 x 26 3/8in. (94.3 x 67cm)