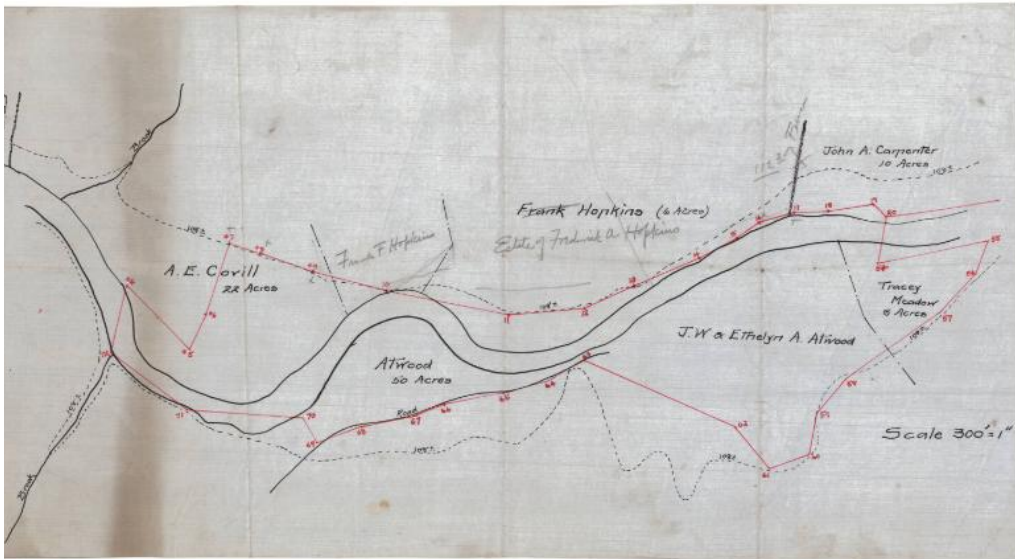


Basic Detail Report



Title Quinebaug River, Killingly, Connecticut

Date 1908

Primary Maker Erastus Worthington

Medium Drawing; black and red ink on drafting cloth

Description Map of the Quinebaug River and owned land along it as it flows through portions of Killingly, Connecticut. Lots are labeled with the owner's name, a sketch of any existing fences or stone walls, and a broken solid line marking the flow line. Property owners include F.S. Bruce, A.E. Covill, Atwood, Frank Hopkins, J.W. and Ethelyn A. Atwood, John A. Carpenter and Tracey Meadow. There is a red line marked with numbers from 4-20 north of the river and 54-72 south of it, which no explanation for the significance.

Dimensions Primary Dimensions (image height x width): 10 x 18 3/4in. (25.4 x 47.6 cm) Sheet (height x width): 10 x 18 3/4in. (25.4 x 47.6cm)