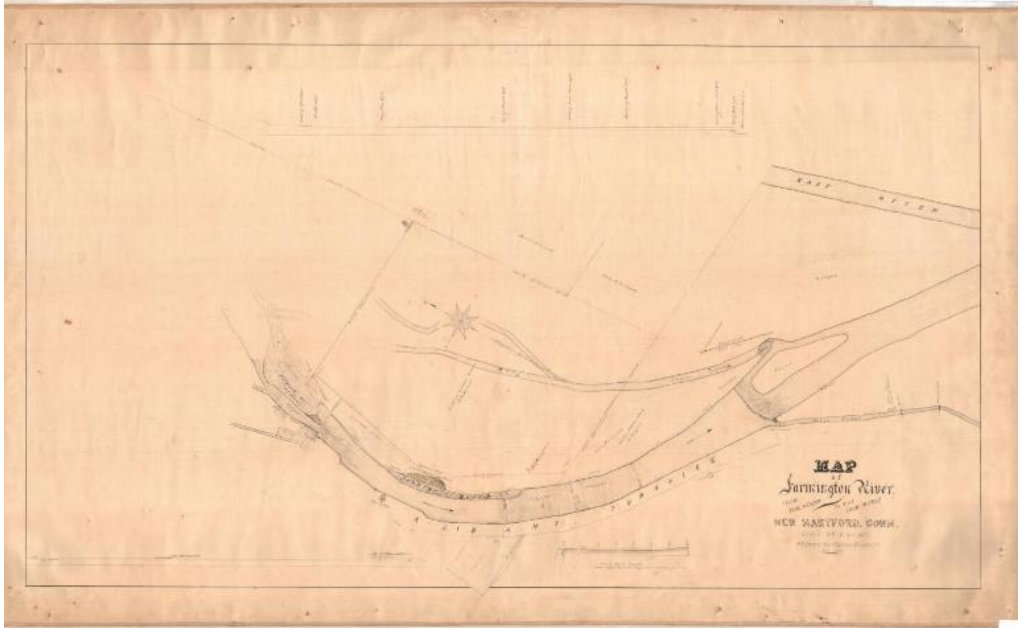


Basic Detail Report



Title Map of Farmington River from Pine Meadow to the Iron Works

Date 1859

Primary Maker Hiram G. Loomis

Medium Drawing; black ink on paper, lined with linen

Description Map of the Farmington River in New Hartford, Connecticut, as it flows south from a factory to the East River. The river is dammed above the Forge Canal, which is depicted with two bulkheads, a dam and gates. Property along the river is depicted, inscribed with the owner's name, geographic coordinates, dimensions in feet and chains, and area in acres, roods and rods. Some notable land features are shown, such as pine trees and stumps. The Albany Turnpike is shown running parallel to the river. At the bottom of the sheet is an elevation profile of rapids in the river, and at the top is a profile from the head of the breakwater to below the dam.

Basic Detail Report

Dimensions Primary Dimensions (image height x width): 26 1/4 x 46 1/4in. (66.7 x 117.5cm) Sheet (height x width): 30 x 50 1/2in. (76.2 x 128.3cm) Mount (height x width): 30 x 50 1/2in. (76.2 x 128.3cm)