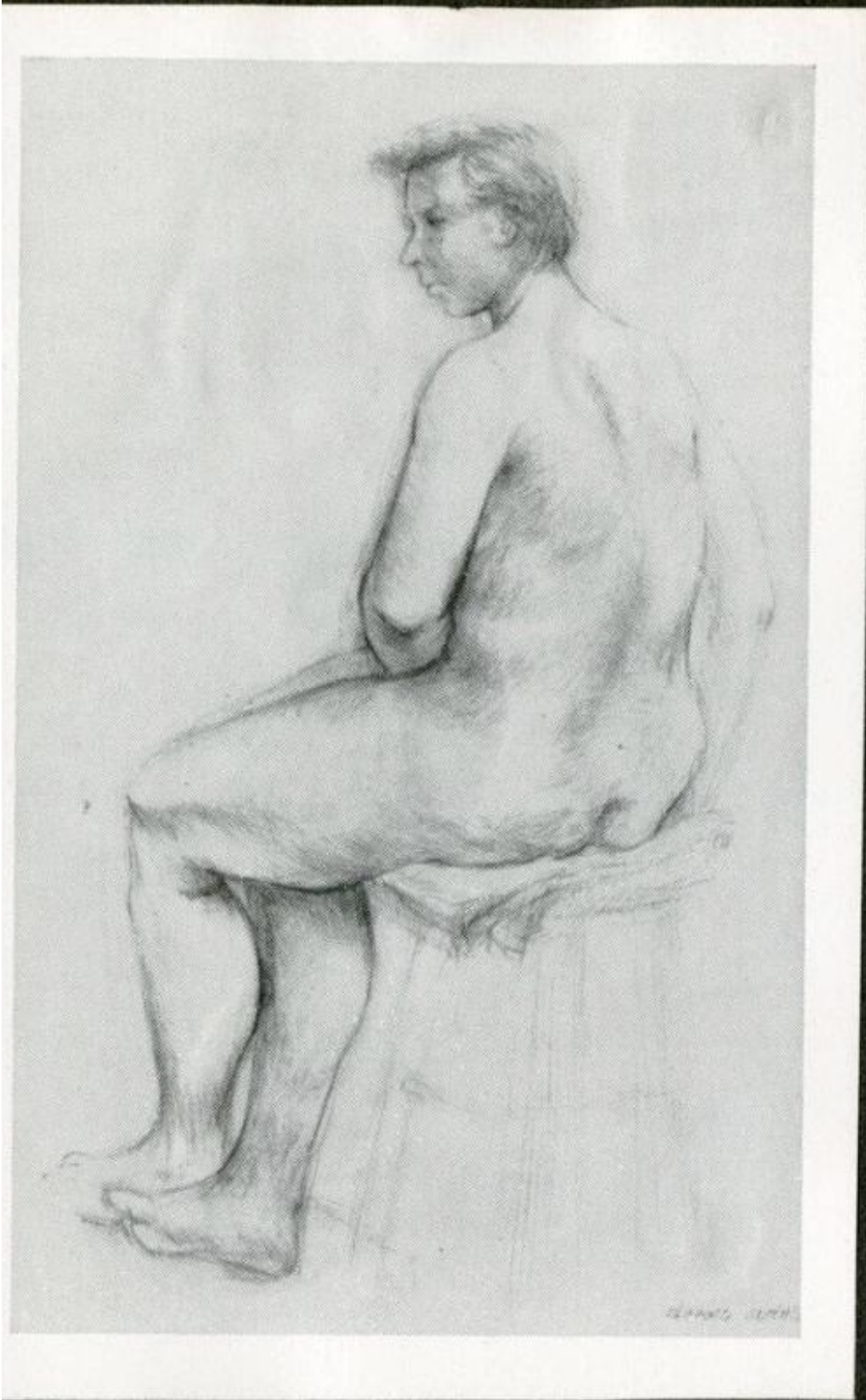


Basic Detail Report



Title Sculptures and drawing

Date 1955

Basic Detail Report

Primary Maker Unknown

Medium Photographs; gelatin silver on paper, on paper Photomechanical print;

halftone on paper, on paper

Description A halftone reproduction of a figure drawing, and two photographs, one of a clay sculpture and the other of three metal sculptures.

Dimensions Primary Dimensions (2012.236.240 image height x width): 4 x 2 1

/2in. (10.2 x 6.4cm) Sheet (2012.236.240 height x width): 4 3/8 x 2 3/4in. (11.1 x

7cm) Mount (height x width): 11 x 8 1/2in. (27.9 x 21.6cm) Primary Dimensions

(2012.236.241 image height x width): 3 3/4 x 2 7/8in. (9.5 x 7.3cm) Sheet

(2012.236.241 height x width): 4 1/4 x 3 1/4in. (10.8 x 8.3cm) Mount (height x

width): 11 x 8 1/2in. (27.9 x 21.6cm) Primary Dimensions (2012.236.242 image

height x width): 4 3/4 x 5 1/2in. (12.1 x 14cm) Sheet (2012.236.242 height x

width): 4 3/4 x 5 1/2in. (12.1 x 14cm) Mount (height x width): 11 x 8 1/2in. (27.9 x

21.6cm)