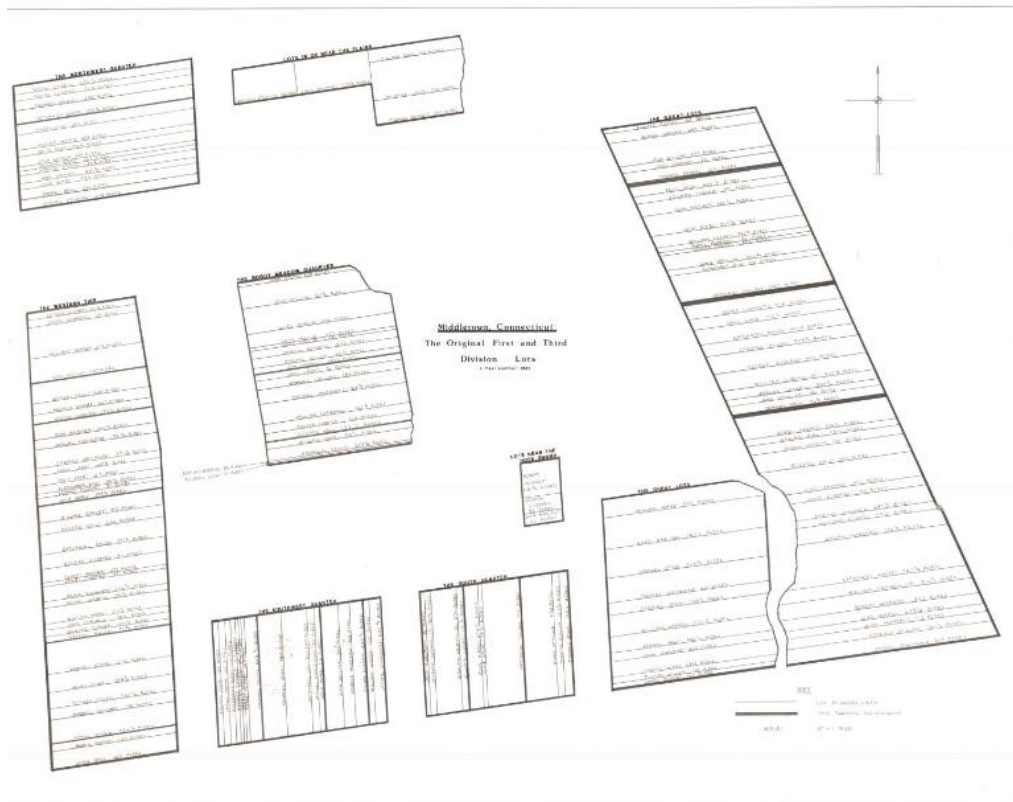


# Basic Detail Report



## Title Middletown, Connecticut: Original First and Third Division Lots

Date 1981

Primary Maker J. Paul Loether

Medium Drawing; pencil and dry transfer letters on paper

Description Map of parts of what was Middletown, Connecticut, in the late-seventeenth to early-eighteenth centuries, showing the Northwest Quarter, lots in or near the plains, the Great Lots, the Western Tier, the Boggy Meadow, the Southwest Quarter, the South Quarter, and the lots near the Hope Swamp. The map is designed to show the placement of these areas in the absence of the North Commons, the Plain Lots, the Nooks Divisions, the South Commons, an unnamed area that contains lots, a meadow, and "Indian land," the upland lots

# Basic Detail Report

southeast of town, and half mile lots, all of which were also part of Middletown

during that time period. The divisions that are shown contain lots with the

owner's name and their size in acres. At the bottom right is the map key.

Dimensions Primary Dimensions (image height x width): 25 1/8 x 32 3/8in. (63.8 x

82.2cm) Sheet (height x width): 26 5/8 x 34 3/8in. (67.6 x 87.3cm)