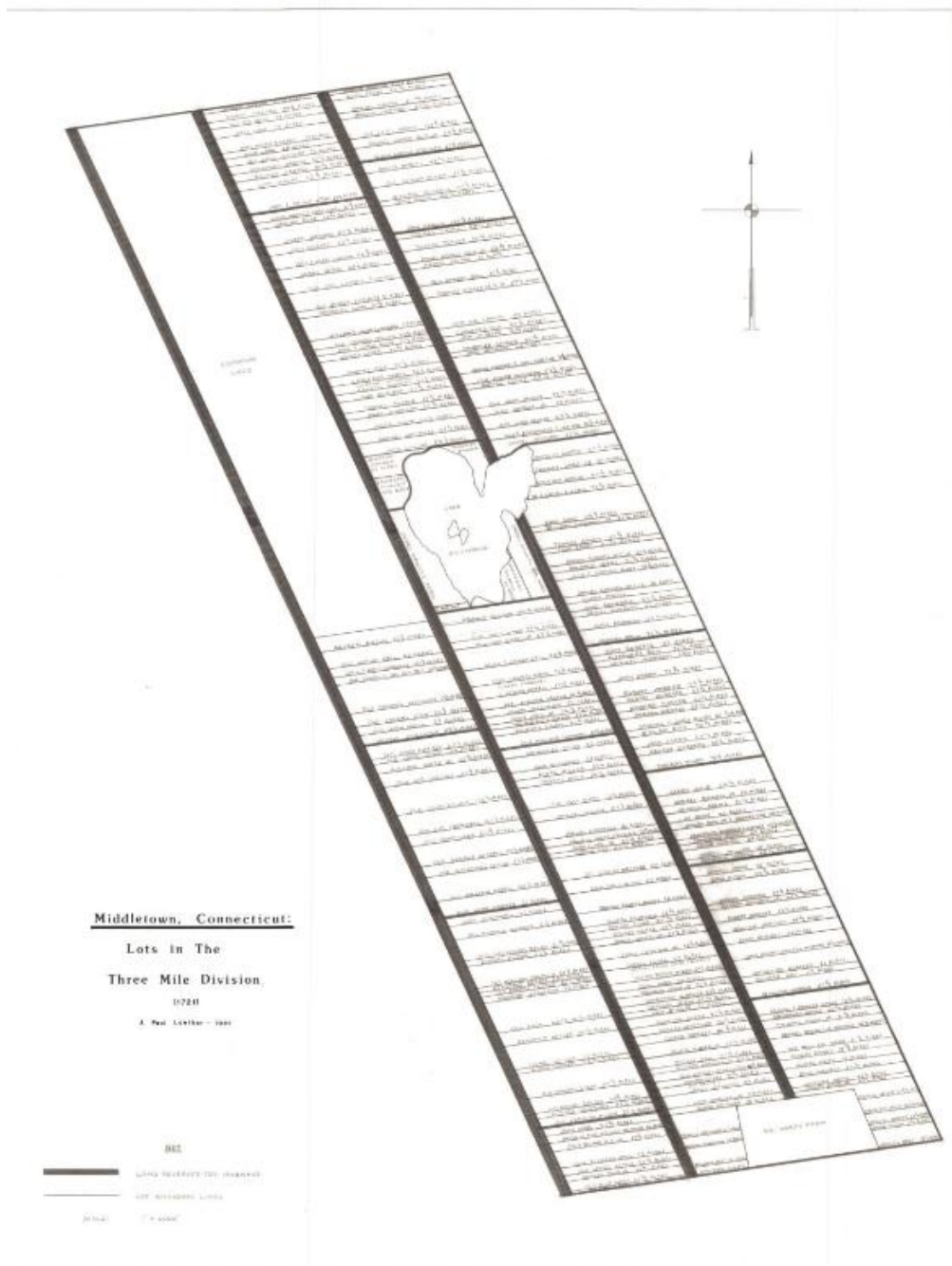


# Basic Detail Report



**Title Middletown, Connecticut: Lots in the Three Mile Division, 1721**

Date 1981

Primary Maker J. Paul Loether

Medium Drawing; pencil and dry transfer on paper

Description Map of part of what was Middletown, Connecticut, in 1721, showing lots of land on along local highways, with Lake Pocotapaug in the middle, and

# Basic Detail Report

Mr. Hart's farm at the bottom bridging both sides of the highway. Each lot is labeled with the property owner's name and size in acres. At the bottom left is the key.

Dimensions Primary Dimensions (image height x width): 25 5/8 x 19 3/4in. (65.1 x 50.2cm) Sheet (height x width): 27 7/8 x 21 5/8in. (70.8 x 54.9cm)