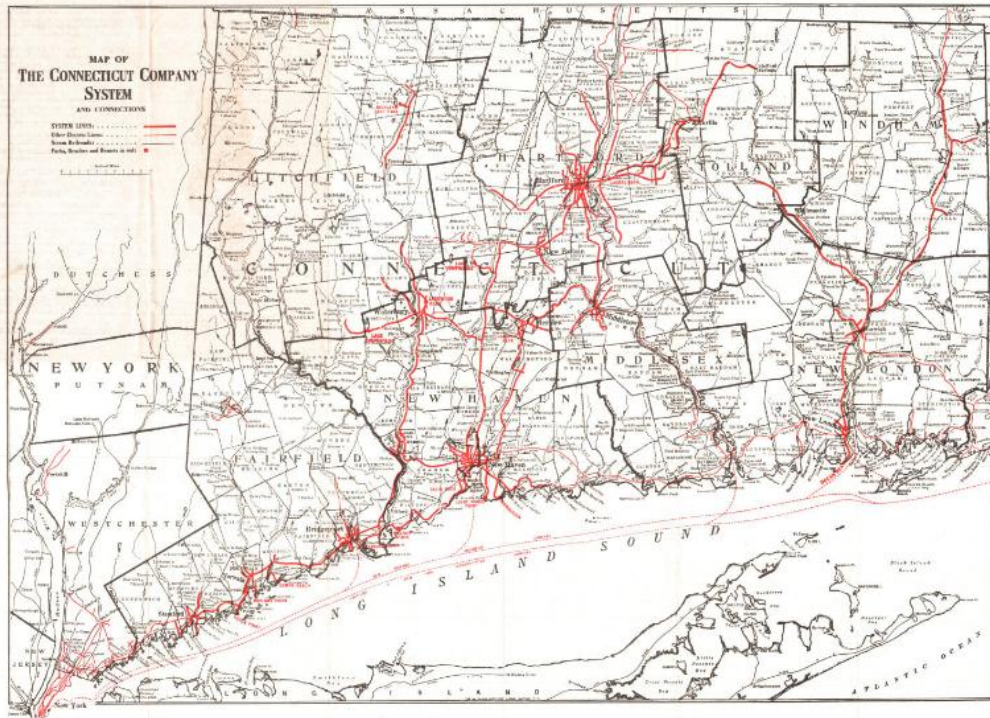


# Basic Detail Report



## Title The Map of the Connecticut Company System and Connections

Date 1915-1929

Primary Maker Traffic Department, New Haven, Connecticut

Medium Lithography; black and red printer's inks on wove paper

Description Map of Connecticut showing the Connecticut Company's system of street railways and other electric lines, including those of the Stamford Division, that ran into New York. Steam railroad lines, steamboat lines, parks, benches and resorts are also included on the map. To the left of the map is a legend that explains the different lines and symbols. On the back cover, there is a map of the Connecticut Company's "Trolley Express" service.

Dimensions Primary Dimensions (image height x width): 15 7/8 x 22 3/8in. (40.3 x 56.8cm) Sheet (height x width): 17 3/4 x 24in. (45.1 x 61cm)