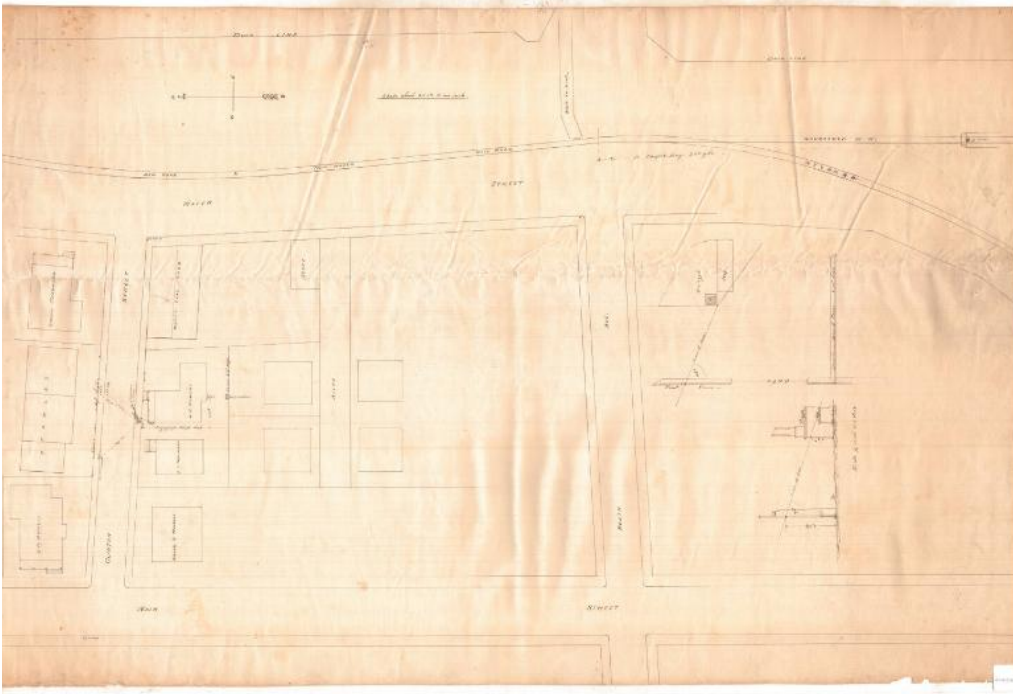


Basic Detail Report



Title Site of the Murder of George M. Colvocoresses, Bridgeport, Connecticut

Date 1872

Primary Maker Unknown

Medium Drawing; black ink on wove paper

Description Manuscript map of Bridgeport, Connecticut, from Clinton Street to the north, the intersection of the Naugatuck and New York and New Haven Railroads and the dock to the east, South Avenue to the south, and Main Street to the west. Most of the detail is concentrated around Clinton Street, which is lined to the north with stables and the dwellings of C.H. Russell and Gideon Thomas, and to the south with Kenyon Rosseau's, S.C. Northrop's and W.H. Powers' residences and Ward's coal shed. In front of Powers' house lies the unidentified body of a man, next to which are two dots representing an umbrella and a cane; across the street is a dot representing a pistol. At the bottom of the

Basic Detail Report

sheet, in the space below South Avenue, are two projections of the trajectory of the bullet, one from the side and one from above.

Dimensions Primary Dimensions (image height x width): 39 5/8 x 25 3/4in. (100.6 x 65.4cm) Sheet (height x width): 39 5/8 x 25 3/4in. (100.6 x 65.4cm)