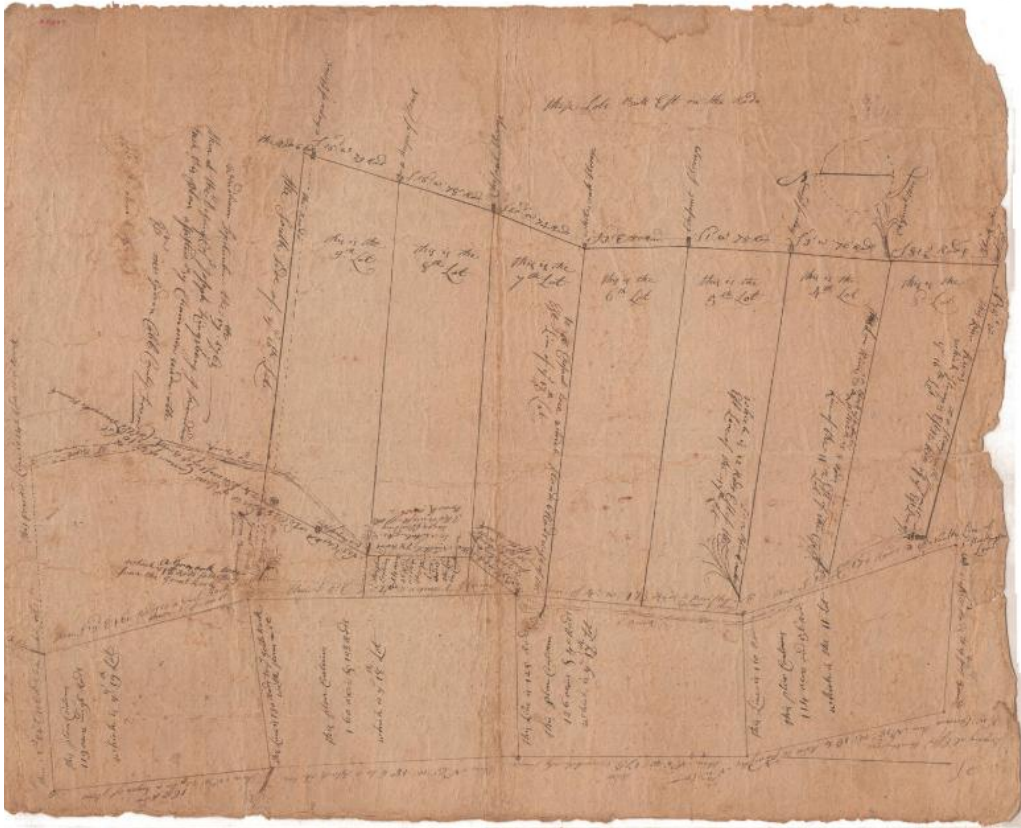


# Basic Detail Report



## Title Land in Windham County, probably owned by Captain Joseph Kingsbury

Date 1763

Primary Maker Gideon Cobb

Medium Drawing; black ink on paper

Description Map of a number of lots of land in Windham County, Connecticut, with distance measurements in rods and area in acres. Several trees are depicted with little sketches and notes about what species of tree they were.

The West Brook is shown on the left side of the map.

Dimensions Primary Dimensions (image height x width): 25 3/4 x 20 5/8in. (65.4 x 52.4cm) Sheet (height x width): 25 3/4 x 20 5/8in. (65.4 x 52.4cm)