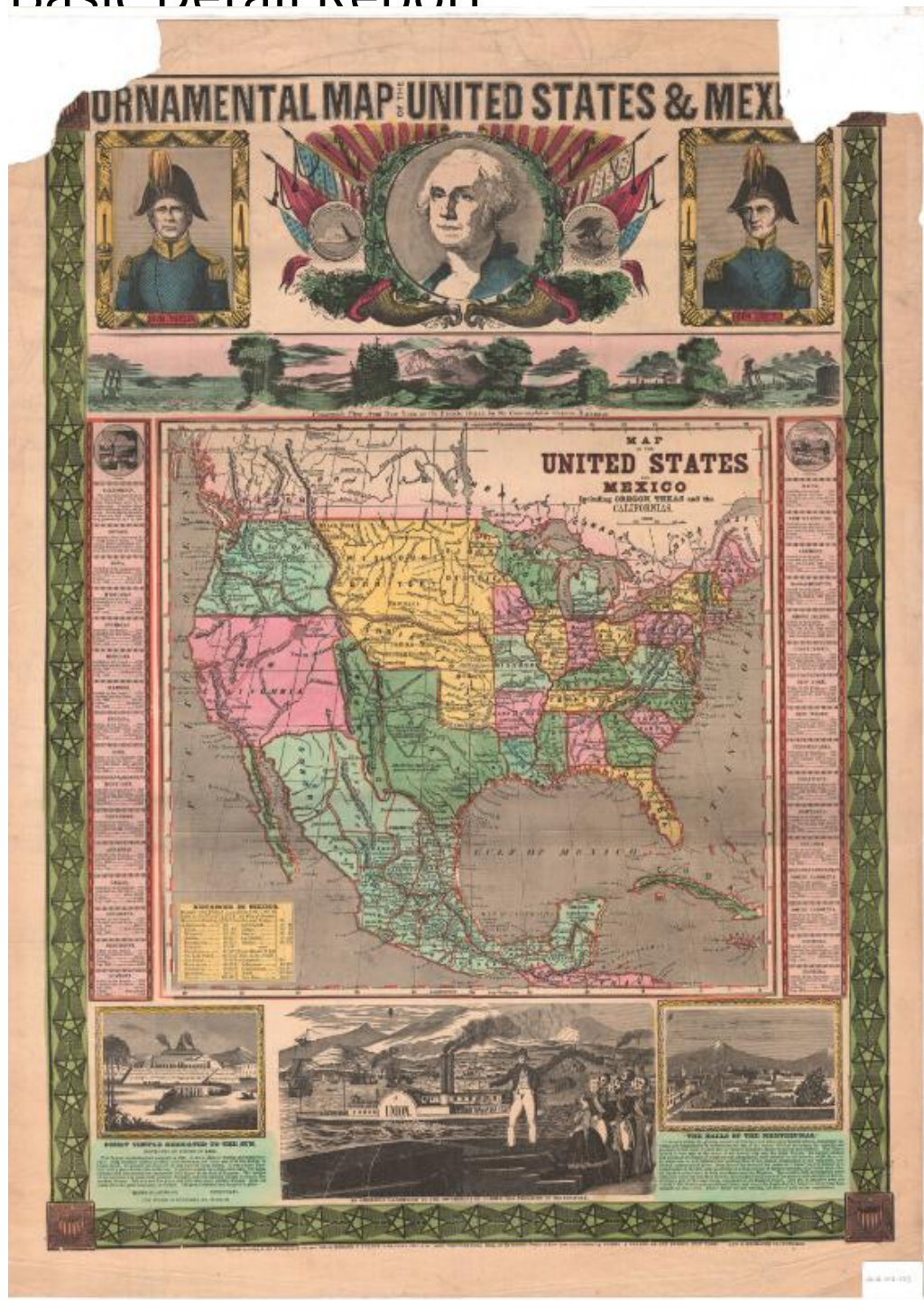


# Basic Detail Report



**Title** Ornamental Map of the United States & Mexico

**Date** 1848

**Primary Maker** Ensign & Thayer

**Medium** Lithography; printer's ink and watercolor on wove paper

# Basic Detail Report

Description Map of the United States, Mexico, part of Guatemala and part of the

Caribbean islands, from the border of Canada to the north, the Atlantic Ocean to

the east, Guatemala to the south, and the Pacific Ocean to the west. The states,

including those of Mexico, and countries are outlined in red and colored pink,

green or yellow. In the bottom left corner of the map is a list of distances in

Mexico. Two columns, one on either side of the map, list the 32 states and

territories comprising the United States and provide statistics for each entry on

the settlement date, the country settled by, the year admitted into the Union,

the population, capital and the population of the capital. The bottom and sides

are decorated with a border of stars linked by chains, and at all four corners,

there is a shield featuring stars and stripes. Right above the map, there is a

panoramic image from New York to the Pacific Ocean "by the Contemplated

Oregon Railroad." The picture is bookended by similar scenes depicting ships

sailing off of a coast and in a harbor surrounded by busy factories, respectively.

The other scenes show the Rocky Mountains, and what appears to be a

university building. Along the top of the sheet, right below the title, there are

three vignettes, with images of General Taylor and General Scott flanking a

larger portrait of Washington. The frames around the generals contain various

symbols: oak leaves and acorns; shields with a single star and eleven stripes;

and two unidentified monuments, one of which appears to be the Washington

Monument. Around Washington's portrait are mirror images featuring leafy oak

branches laden with acorns, cornucopias or horns of plenty, liberty caps, and

the American flag. On the right side of the portrait is a banner that says "Liberty"

# Basic Detail Report

and the seal of Mexico; on the left, there is a banner that says "Justice" and the reverse of the Great Seal of the United States. Below the map, there are three more vignettes. On the left, there is an image of Templo Mayor, an Aztec temple, with text describing its physical features and use; on the right is an image of Chapultepec Castle, with accompanying text about the "Halls of Montezuma." In the center, there is a much larger image of a man in fashionable dress, lecturing to the "sovereigns of Europe" about the progress of American shipping, farming, manufacture and exploration.

Dimensions Primary Dimensions (image height x width): 29 1/8 x 21in. (74 x 53.3 cm) Sheet (height x width): 31 3/4 x 23 1/8in. (80.6 x 58.7cm)