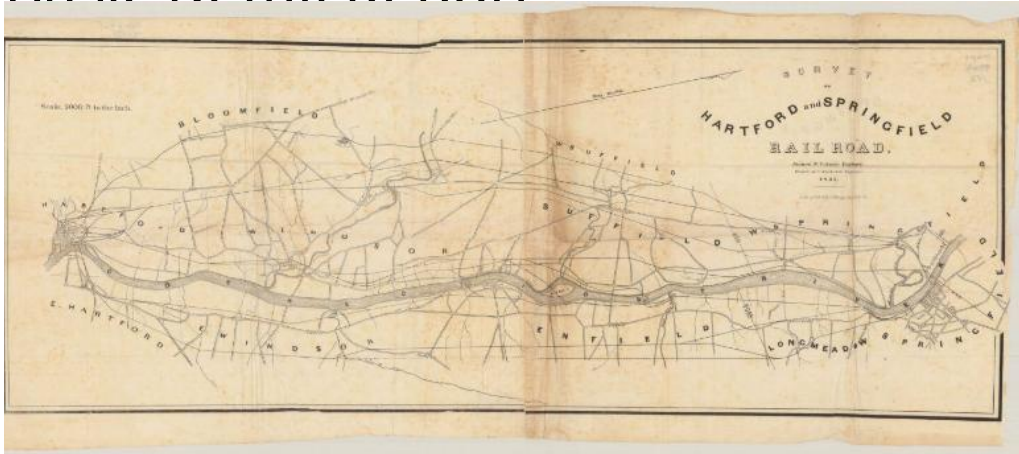


Basic Detail Report



Title Survey of Hartford and Springfield Rail Road

Date 1841

Primary Maker James N. Palmer

Medium Lithography; black printer's ink on wove paper

Description Map from Hartford, Connecticut, to Springfield, Massachusetts, oriented east-west on the map, with Hartford on the left, Springfield on the right, and the Connecticut River on the bottom. The towns between the two cities are labeled, and what are presumably roads are denoted with parallel solid lines but are not labeled. The potential railroad routes are depicted with solid single lines. There are various routes running between Hartford and Springfield; at least two are identified as the Hartford and New Haven Railroad and the Western Railroad, while the others are unlabeled. Other notable landmarks include Kings Island and the Farmington, Scantic, Mill and Fresh Water Rivers. The magnetic north arrow at the top of the map points toward the top right corner.

Dimensions Primary Dimensions (image height x width): 10 3/8 x 28in. (26.4 x 71.1 cm) Sheet (height x width): 12 x 29 1/4in. (30.5 x 74.3cm)