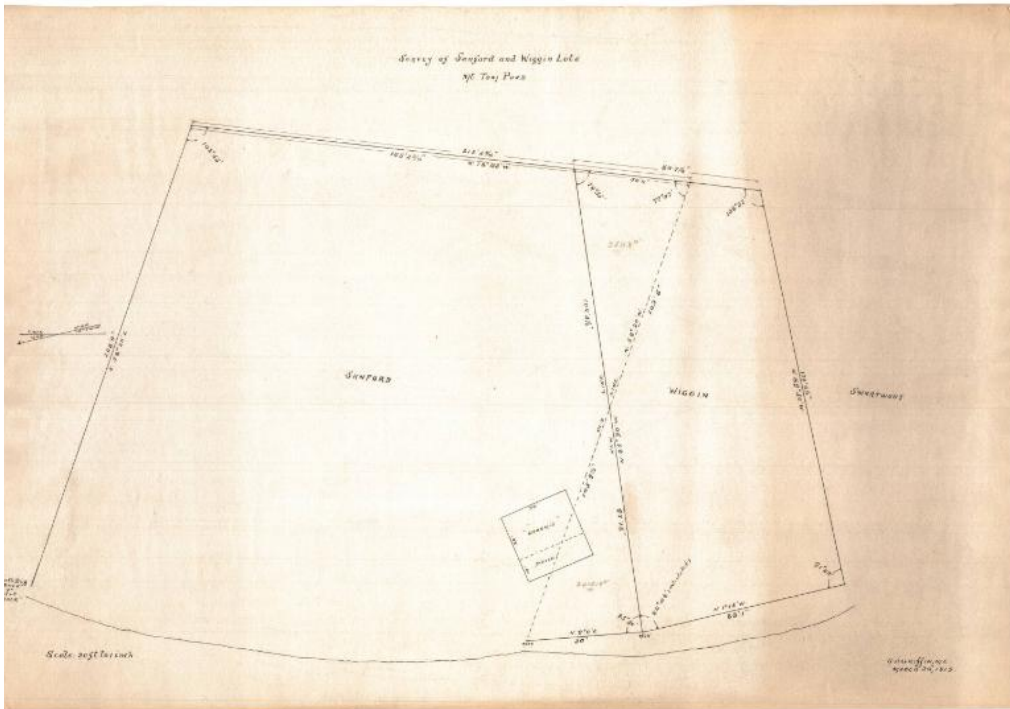


# Basic Detail Report



## Title Survey of Sanford and Wiggin Lots, Mt. Tom Pond

Date 1915

Primary Maker Samuel Palmer Griffin

Medium Drawing; black ink on wove paper

Description Plat map of the Sanford and Wiggins lots in Litchfield, Connecticut, showing the old and new lines, and including geographical bearings and measurements in feet and inches along all of the boundary lines. The Sanford property includes two structures, "Nokomis" and a piazza, and in the lower left corner, the edge of the lot is marked by the "north big rock or spilt rock." To the left of the map, the north arrows indicate true and magnetic north, and they show that the map is oriented east-west.

Dimensions Primary Dimensions (image height x width): 13 1/2 x 21in. (34.3 x 53.3

cm) Sheet (height x width): 15 1/8 x 22 1/4in. (38.4 x 56.5cm)