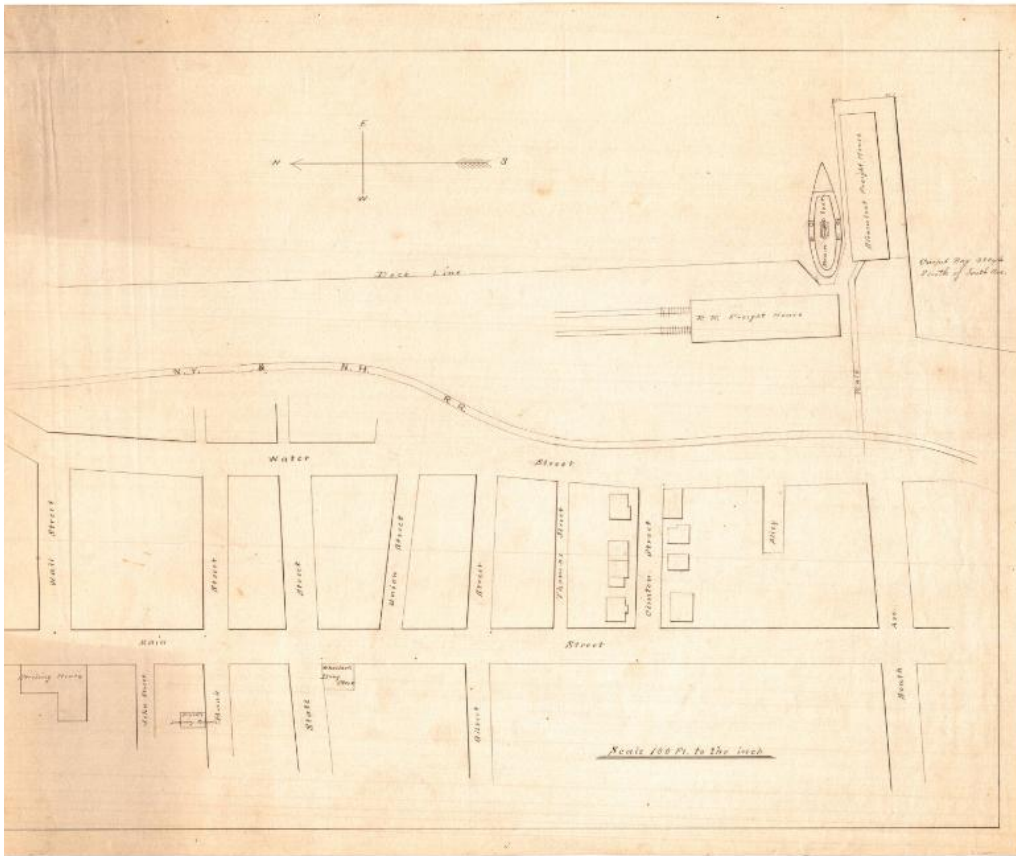


Basic Detail Report



Title Map of Bridgeport

Date 1872

Primary Maker Unknown

Medium Drawing; black ink on wove paper

Description Map of a portion of Bridgeport, Connecticut, oriented to show an east-west view of the New York and New Haven Rail Road freight house, the steamboat freight house, the dock line, and city streets west of the transportation infrastructure. Streets include Water Street and Main Street running north-south, and Wall, Bank, State, Union, Gilbert, Thomas and Clinton Streets, and South Avenue, running east-west. Notable local landmarks are Sterling House, Ward's Dining Saloon, and Wheeler's Drug Store, all located west of Main Street. Other buildings are drawn on the map, but they are not named.

Basic Detail Report

In the bottom right corner in an inscription that reads, "Carpet Bag 300 yds

south of South Ave." Very light penciled lines and inscriptions indicate that the map is unfinished.

Dimensions Primary Dimensions (image height x width): 14 9/16 x 19in. (37 x 48.3 cm) Sheet (height x width): 15 15/16 x 19in. (40.5 x 48.3cm)