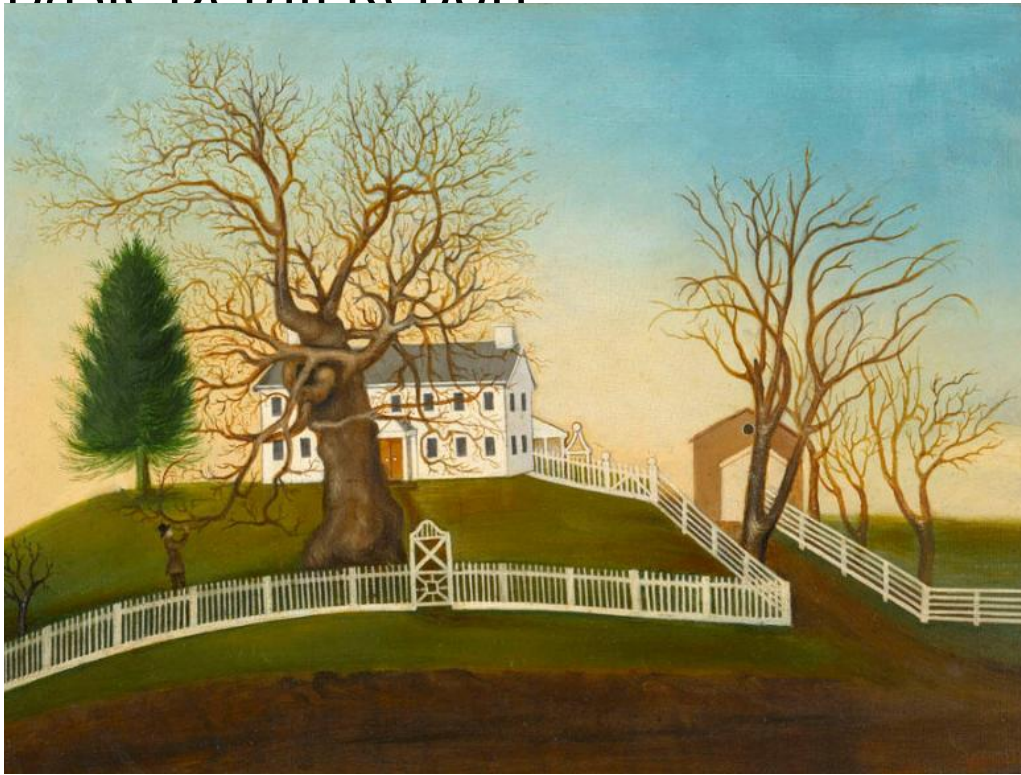


Basic Detail Report



Title Wyllys Mansion First, Hartford

Date before 1834

Primary Maker George Francis

Medium Painting; oil on wood panel in wood frame

Description A man wearing a top hat stands beneath a large leafless oak tree, holding one of the lower branches. A large white house with a porch and what appears to be a gazebo is on a low hill in the background. An evergreen tree is at the left, additional leafless trees and a barn or carriage house are on the right. A white picket fence with an ornate gate surrounds the property. A dirt road is in the foreground.

Dimensions Primary Dimensions (panel height x width): 11 3/4 x 16 1/4in. (29.8 x 41.3cm) Frame (height x width x depth): 15 x 19 1/2 x 1 1/2in. (38.1 x 49.5 x 3.8cm)