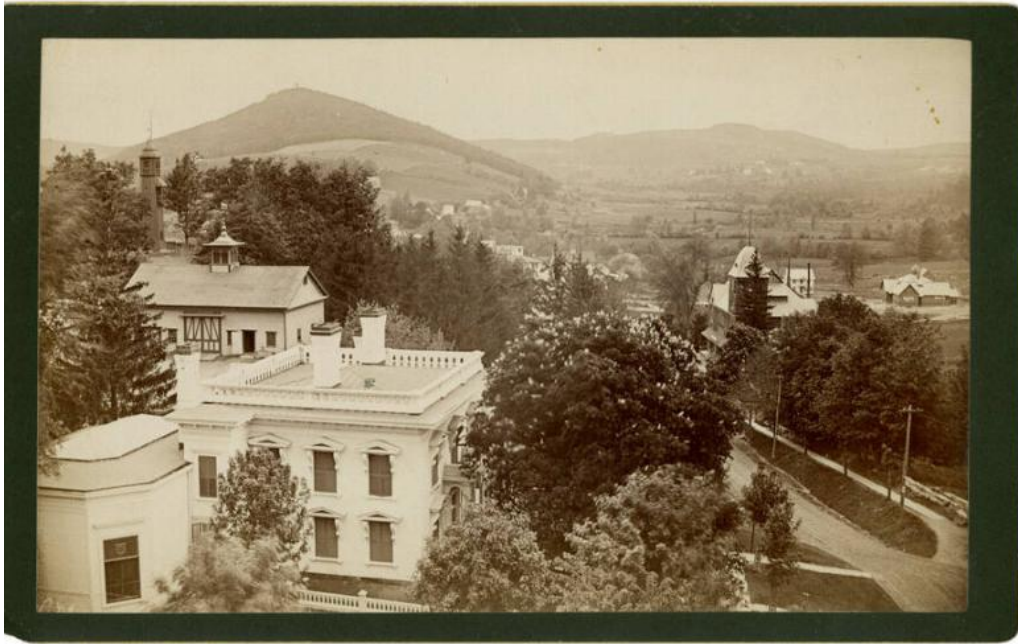


Basic Detail Report



Title Norfolk, Connecticut, Northern View from Church

Date circa 1900

Primary Maker Marie Kendall

Medium Photography; gelatin printing-out paper or collodion printing-out paper
on cardboard

Description A large building, probably a house, with a low hip roof, two chimneys, a balustrade and pediments over the windows, is in the left foreground, partially concealed by trees, including a chestnut tree in blossom. A small polygonal structure is at the far left. A barn with a cupola, painted in contrasting colors, is behind the house. A tall tower, apparently an observation tower, is behind the barn. On the right, a dirt road is lined with utility poles and a sidewalk. The large Queen Anne building with a tower is a commercial block. Additional houses, farms, fields and pastures, are in the right background. The wooded slopes of a mountain with its summit tower are in the left background.

Basic Detail Report

Dimensions Primary Dimensions (image height x width): 4 11/16 x 7 9/16in. (11.9

x 19.2cm) Sheet (height x width): 4 11/16 x 7 9/16in. (11.9 x 19.2cm) Mount

(height x width): 5 1/4 x 8 1/2in. (13.3 x 21.6cm)