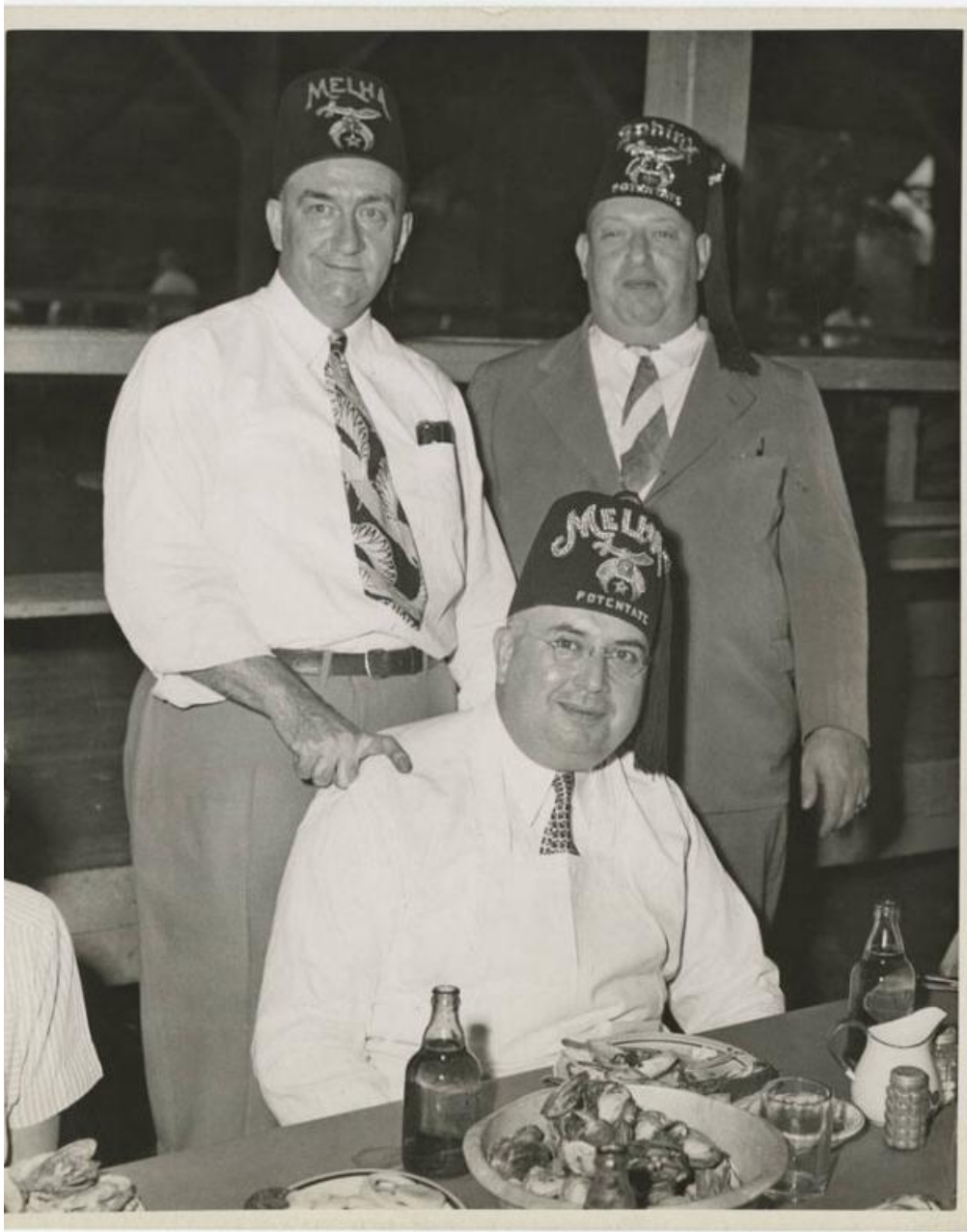


# Basic Detail Report



**Title** Clambake, Melha Temple

**Date** 1944

**Primary Maker** Gordon L. Ryder

**Medium** Photography; gelatin silver print on paper

**Description** A man is seated at a table in front of a plate of shellfish, presumably clams. He is wearing wire-rimmed eyeglasses, a white shirt and necktie, a bib or

# Basic Detail Report

apron, and a fez with lettering that reads "MELHA / POTENTATE." Two bottles, either beer or soda bottles, a glass of water, a pitcher, and salt and pepper shakers are also on the table. Two additional men, both wearing similar hats, stand behind him.

Dimensions Primary Dimensions (image height x width): 9 5/8 x 7 3/4in. (24.4 x 19.7cm) Sheet: 10 x 8in. (25.4 x 20.3cm)