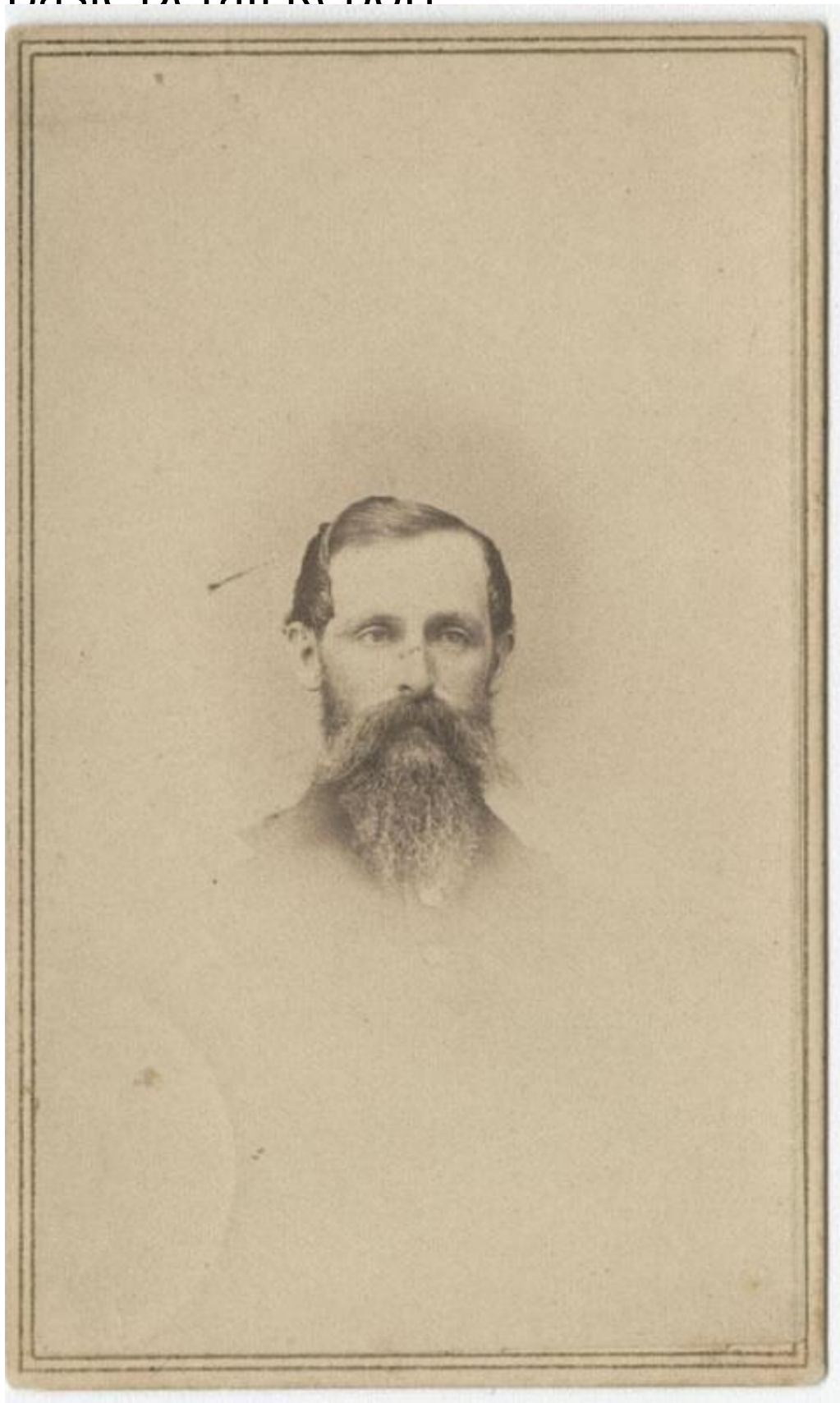


Basic Detail Report



Title James B. Clinton

Basic Detail Report

Date 1861-1865

Primary Maker Fitch W. Burwell

Medium Photography; albumen print on paper on cardboard mount

Description Bust-length portrait of a man with a long beard and mustache. He may be wearing a military uniform, but his clothing is not visible.

Dimensions Primary Dimensions (image height x width): 1 1/4 x 1in. (3.2 x 2.5cm)

Sheet (height x width): 3 3/4 x 2 1/8in. (9.5 x 5.4cm) Mount (height x width): 4 x 2 5/8in. (10.2 x 6.7cm)