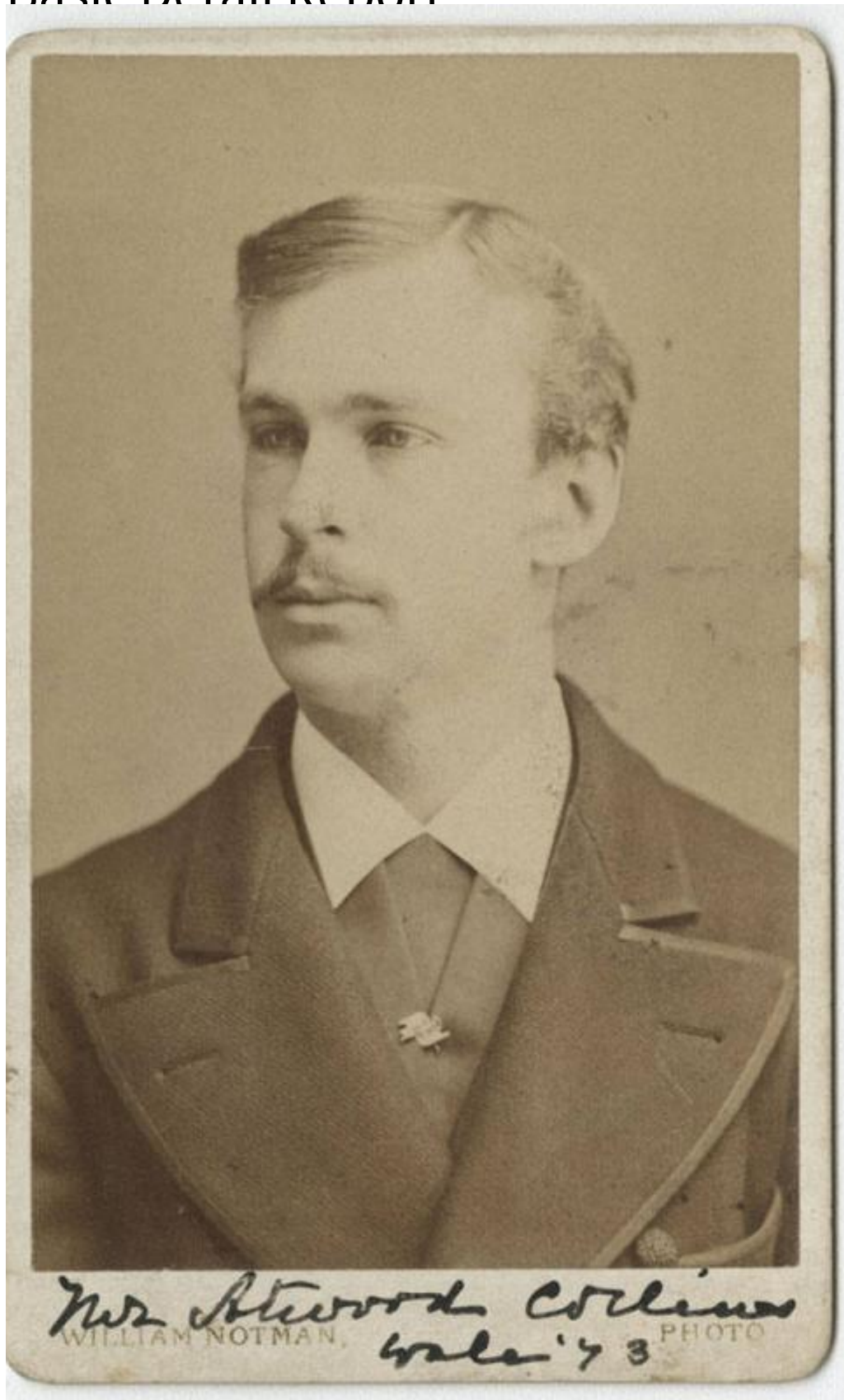


Basic Detail Report



Title Atwood Collins, Yale '73

Basic Detail Report

Date 1873

Primary Maker William Notman

Medium Photography; albumen print on paper on cardboard mount

Description Bust-length portrait of a young man with a mustache. He is wearing a coat with unusually wide lapels. A small pin is fastened to what appears to be vest beneath the coat.

Dimensions Primary Dimensions (height x width): 3 9/16 x 2 1/4in. (9 x 5.7cm)

Sheet (height x width): 3 9/16 x 2 1/4in. (9 x 5.7cm) Mount (height x width): 4 x 2 7/16in. (10.2 x 6.2cm)