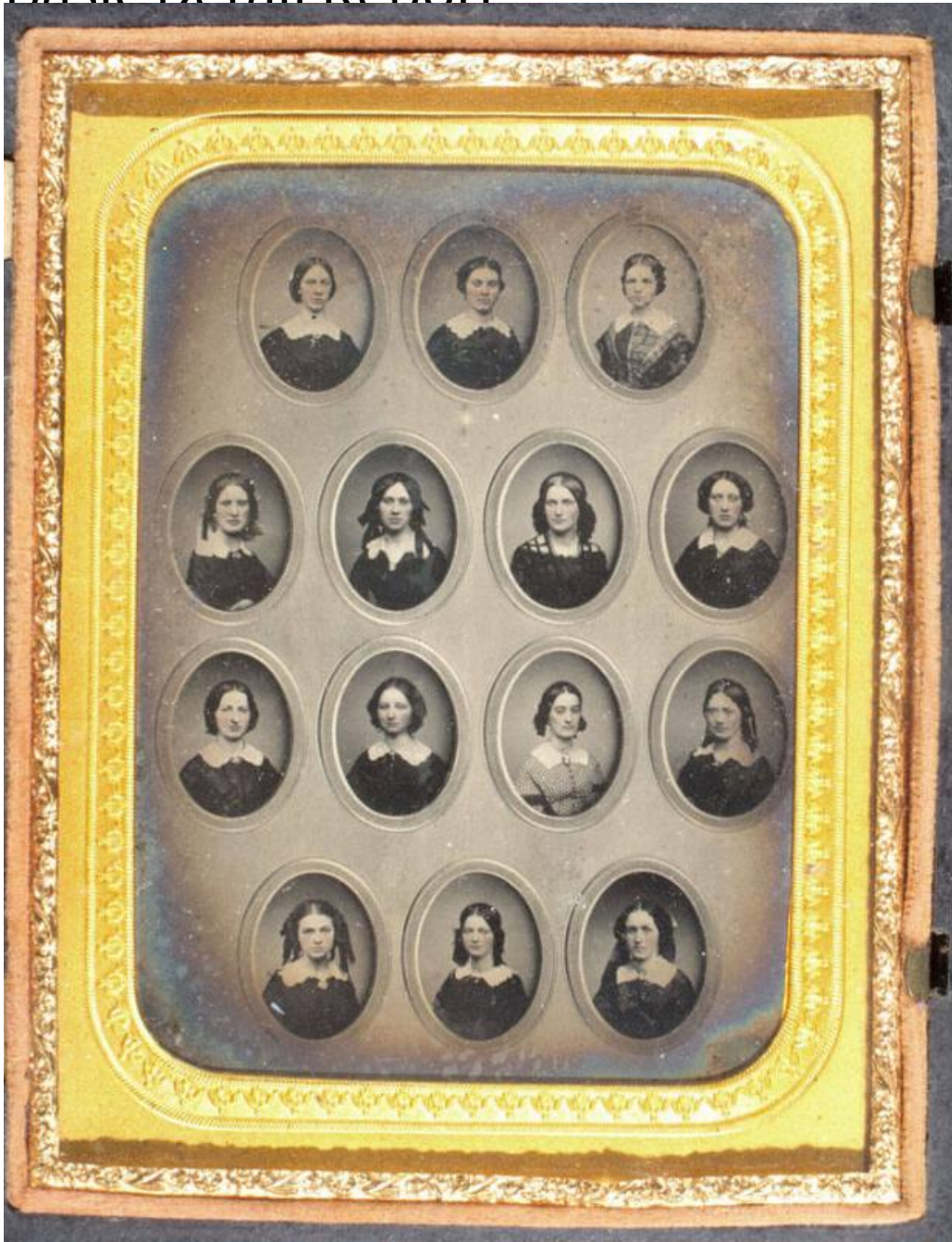


Basic Detail Report



Title Hartford Female Seminary

Date 1857

Primary Maker Unknown

Medium Photography; ambrotype on glass under glass in brass mat in thermoplastic case with velvet pad

Basic Detail Report

Description Fourteen individual oval bust-length portraits of girls are arranged

in four rows within a rectangular brass mat with rounded corners. The velvet

pad has a circular design of intertwining flowers and foliage. The front cover of

the thermoplastic case features an oval central design of a woman on horseback

holding a falcon on her wrist, accompanied by a boy and a dog. A pattern of

interlaced leaves surrounds the oval. The back cover features a cupid kneeling

on the back of an antlered stag, surrounded by a border of birds and flowers.

Dimensions Primary Dimensions (image height x width): 3 3/8 x 2 1/2in. (8.6 x 6.4

cm) Plate (height x width): 4 x 3in. (10.2 x 7.6cm) Other (case height x width x

depth): 5 x 3 7/8 x 1in. (12.7 x 9.8 x 2.5cm)