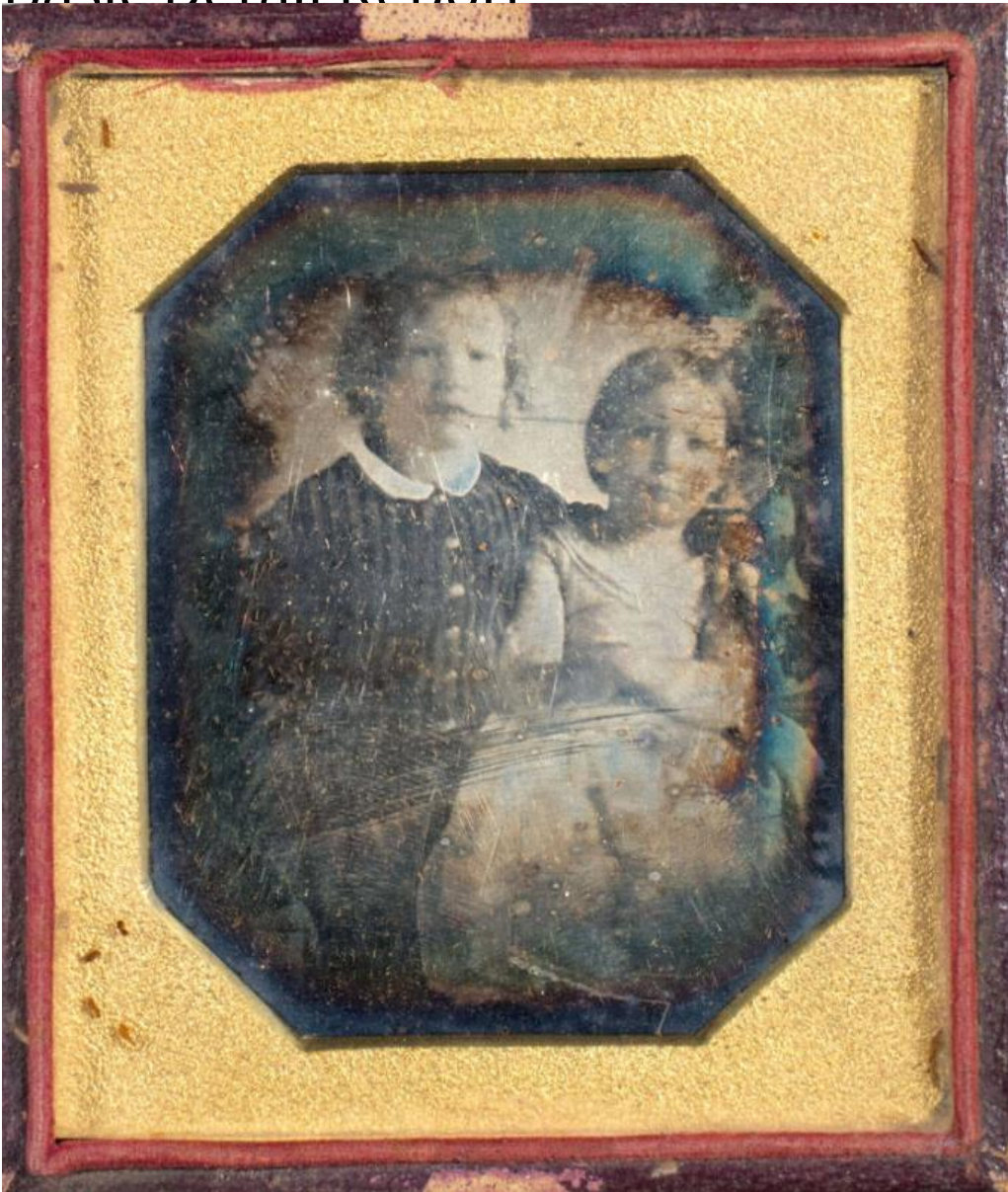


Basic Detail Report



Title Sophia Hamersley and her brother, probably William Hamersley

Date 1845-1849

Primary Maker Unknown

Medium Photography; daguerreotype on silver-coated copper plate under glass
with gilt mat in paper-covered wooden case with embossed red velvet pad

Basic Detail Report

Description Formal studio portrait of a young boy and his younger sister. The

mat is octagonal in shape. The red velvet pad has a floral design. The top half of the case has a pebbled surface with an oval design; the the lower half has a cross in the middle with leaves in the corners.

Dimensions Primary Dimensions (height x width): 2 5/8 x 2 3/16in. (6.7 x 5.6cm)

Plate (height x width): 3 1/4 x 2 3/4in. (8.3 x 7cm) Other (height x width): 3 5/8 x 3 1/8 x 9/16in. (9.2 x 7.9 x 1.4cm)