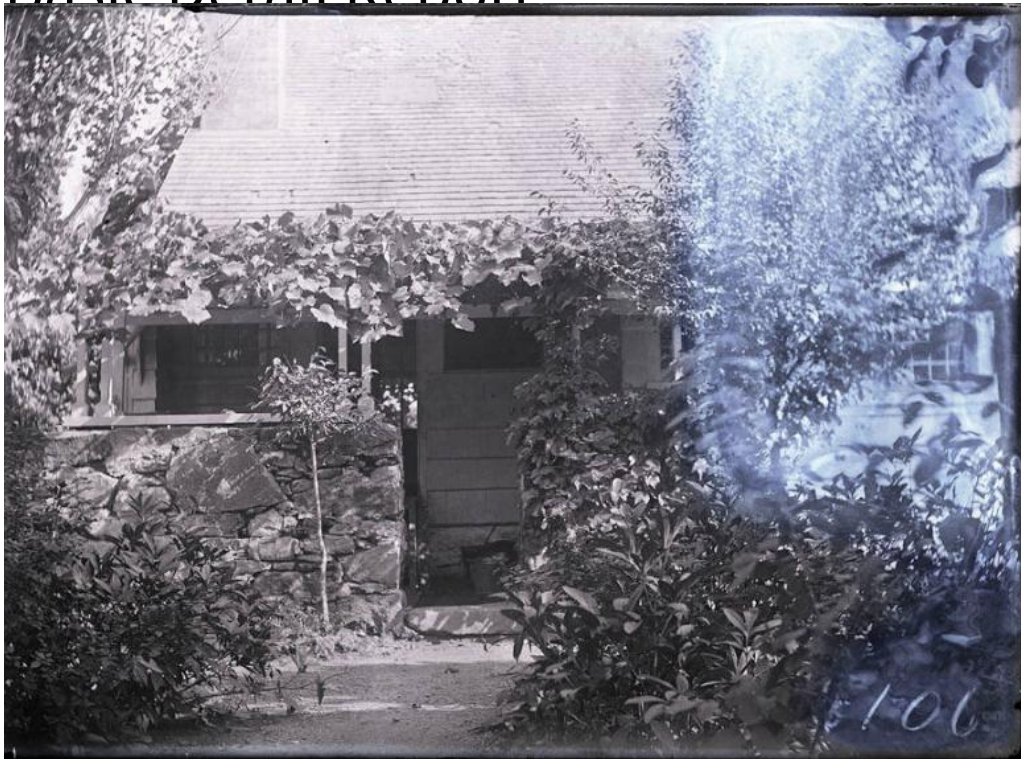


Basic Detail Report



Title Side of House and Plants

Date about 1900

Primary Maker Harriet V. S. Thorne

Medium Photography; gelatin emulsion on glass

Description View of the side of a house and the plants in front of it.

Dimensions Primary Dimensions (image height x width): 4 7/8 x 6 13/16in. (12.4 x

17.3cm) Plate (height x width): 5 x 7in. (12.7 x 17.8cm)