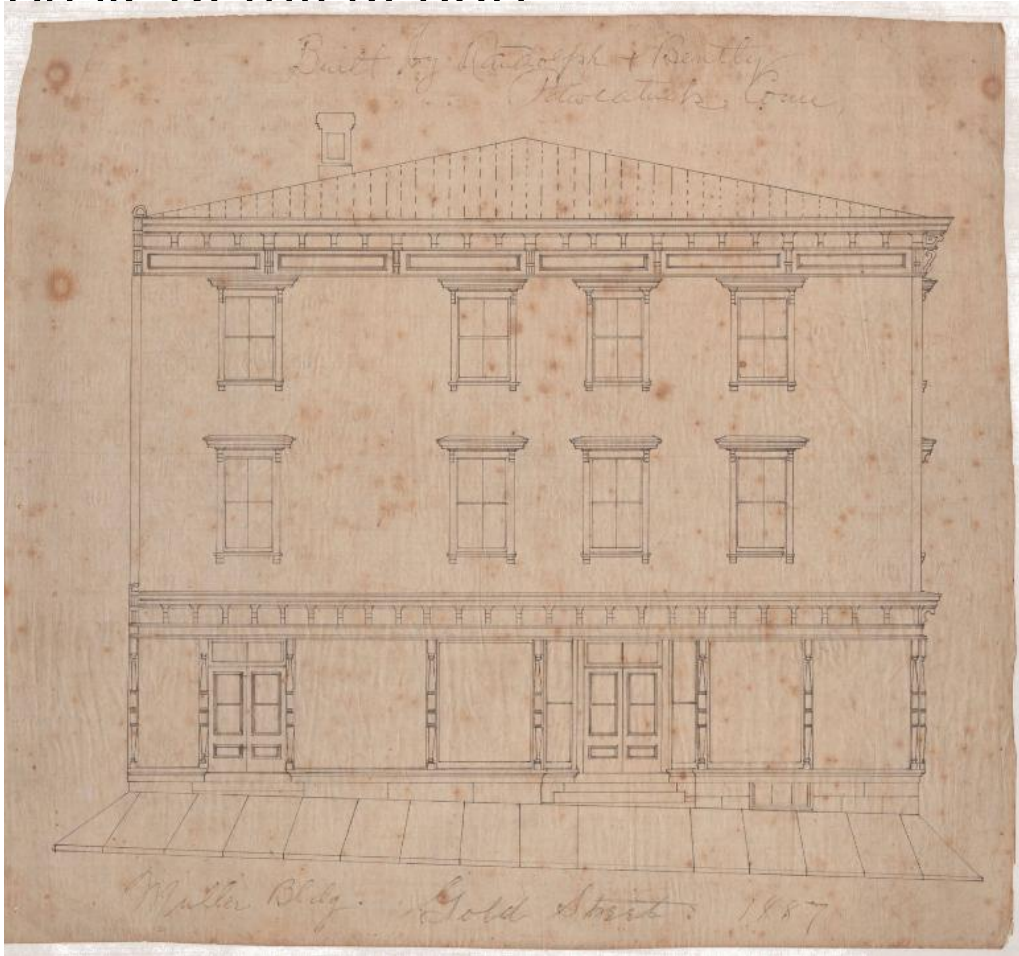


# Basic Detail Report



## Title Muller Building, Gold Street and Pearl Street, Hartford

Date 1887

Primary Maker Unknown

Medium Architectural drawings; black ink on woven linen paper

Description Elevation drawings for a Renaissance Revival style mixed use

building featuring a ribbed hip roof, architrave cornice with scroll-like modillions, and a molded panel entablature with scroll-sawn bracket supports.

Windows featured on the second and third story are multi-pane sash windows

set in architrave frames, with protruding cornice window heads, and molded

sills. The ground story features molded raised panel doors, with large single

pane picture windows separated by paneled pilasters, and an architrave cornice

# Basic Detail Report

with scroll-sawn modillions denoting the separation between first and second stories.

Dimensions Primary Dimensions (height x width): 22 1/4 x 16in. (56.5 x 40.6cm)

or smaller