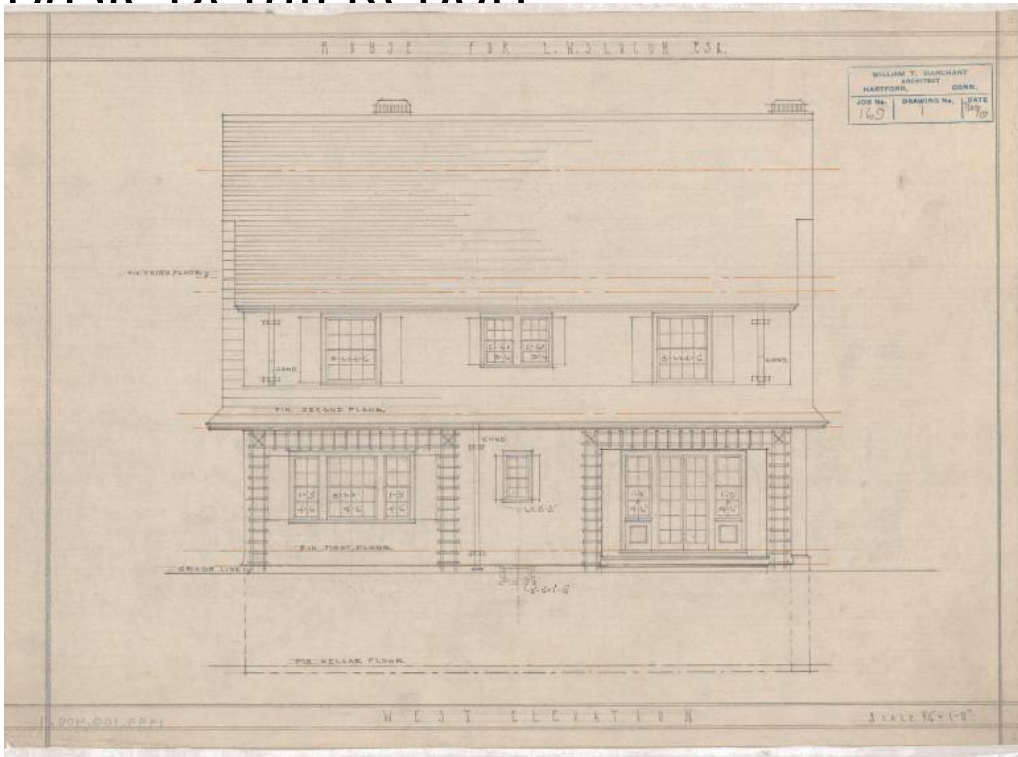


Basic Detail Report



Title House for L.W. Slocum, probably Hartford

Date 1919

Primary Maker William T. Marchant

Medium Architectural drawings; pencil and yellow ink on tracing paper

Description Plans for a three story Dutch Colonial Revival house featuring a gambrel roof with overhanging eaves. A notable feature of the house is the large rough-cut brick chimney on the south elevation which is laid up with wide white joints. The plans for a detached garage are also included. The garage features a hipped roof and multi-pane casement windows. Windows on the house are primarily louvered double-hung sash windows in either the eight-over-eight, six-over-six, or four-over-four configurations. A total of eleven drawings are included in the set; west, south, east, and north elevations, as well as cellar floor, first floor, second floor, and third floor and roof plans. Front elevation, side

Basic Detail Report

elevation, and floor plan drawings are included for the garage. The cellar floor plan includes a toilet, cold room, laundry room, range coal bin, heater coal bin, and heater. The first floor plan includes a living room, entry porch, hall, lavatory, rear passage, pantry, rear porch, kitchen, butler's pantry, and dining room. The second floor plan includes four chambers, two bath rooms, a hall, and linen closet. The third floor plan includes two chambers, a storage room, bath room, and hall. The garage floor plan includes a pitched floor to drain, work bench, and closet.

Dimensions Primary Dimensions: 18 x 12 3/4in. (45.7 x 32.4cm)