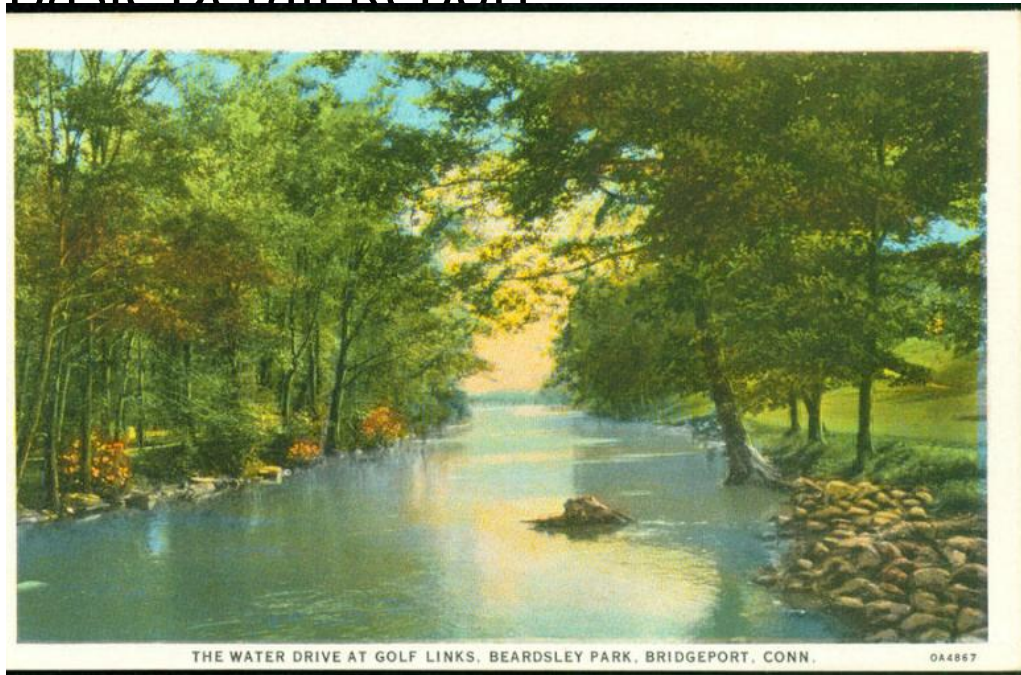


Basic Detail Report



Title The Water Drive at Golf Links, Beardsley Park, Bridgeport, Conn.

Date 1915-1930

Primary Maker Unknown

Medium Photomechanical prints; colored printer's inks on postcard

Description Trees line a long narrow body of water. Flowering shrubs are at the left, rocks and a grassy lawn are at the right.

Dimensions Primary Dimensions (image height x width): 3 1/8 x 5 1/8in. (7.9 x 13cm) **Sheet** (height x width): 3 1/2 x 5 1/2in. (8.9 x 14cm)