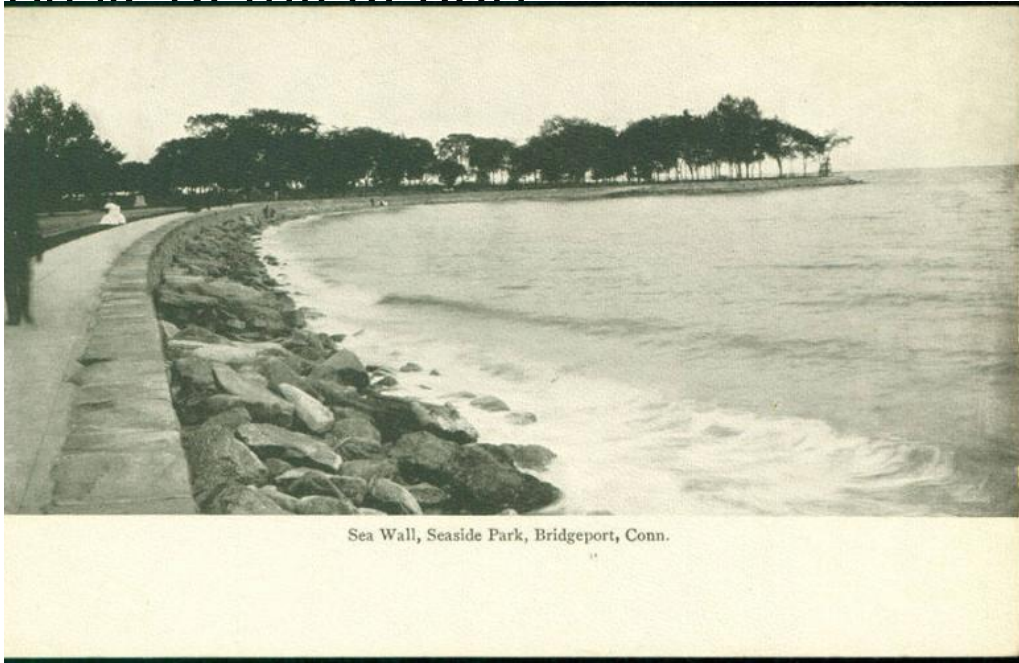


Basic Detail Report



Title Sea Wall, Seaside Park, Bridgeport, Conn.

Date 1900-1950

Primary Maker Unknown

Medium Photomechanical prints; black printer's ink on postcard

Description A man stands on a paved walk running along the waterfront. A grassy lawn and trees are in the background. Small waves break on loosely piled rocks in front of the seawall.

Dimensions Primary Dimensions (image height x width): 2 3/4 x 5 1/2in. (7 x 14cm) Sheet (height x width): 3 1/2 x 5 9/16in. (8.9 x 14.1cm)