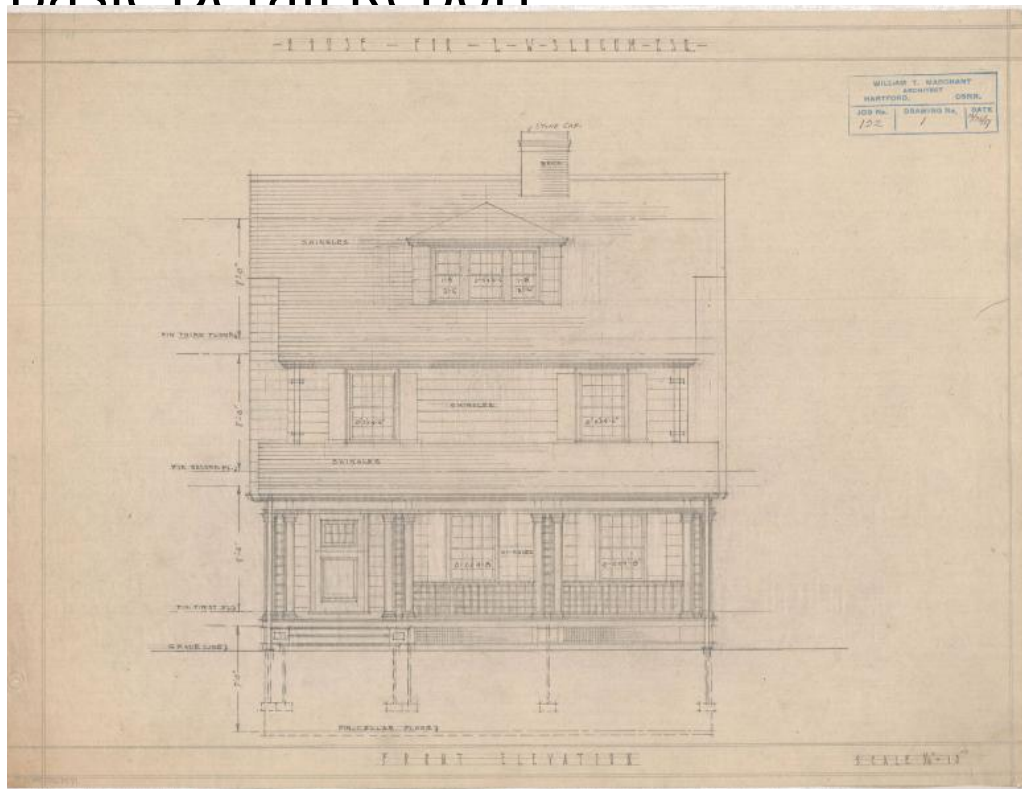


Basic Detail Report



Title House for L.W. Slocum, probably Hartford

Date 1917

Primary Maker William T. Marchant

Medium Architectural Drawings, pencil on tracing paper.

Description Plans for a three-story shingle sided "Dutch" house featuring a gambrel roof with projecting eaves, clipped gable dormers on the third story, a stone capped brick chimney, and front porch supported by fluted pilaster columns. Windows are primarily louvered double-hung sash in either the twelve-over-twelve, or six-over-six configuration. Large tri-part windows are featured on the front third story dormer, and along the side elevation. Eight drawings are included in the set; front, south, east, and north elevations, as well as, cellar, first floor, second floor, and third floor & roof plan. The cellar plans include a heater coal bin, heater, laundry room, toilet and cold room. The first floor plans

Basic Detail Report

include a veranda, living room, entry vestibule, entry hall, dining room, butler's pantry, kitchen, rear entry, and rear porch. The second floor plans include three chambers (bedrooms), hall, bath room, den and balcony. The third floor plans include two bedrooms, hall, bath room, and storage.

Dimensions Primary Dimensions (height x width): 17 1/2 x 13in. (44.5 x 33cm)